

Eurex Clearing

Clearing Web GUI Access Guide

Access to Clearing Web GUI Systems

C7 Clearing GUI

EurexOTC Clear GUI

EurexOTC Clear Margin Calculator GUI

Securities Clearing GUI

Version 3.4

Date 28 May 2019



© Eurex 2019

Deutsche Börse AG (DBAG), Clearstream Banking AG (Clearstream), Eurex Frankfurt AG, Eurex Clearing AG (Eurex Clearing) and Eurex Repo GmbH (Eurex Repo) are corporate entities and are registered under German law. Clearstream Banking S.A. is a corporate entity and is registered under Luxembourg law. Deutsche Boerse Asia Holding Pte. Ltd., Eurex Clearing Asia Pte. Ltd. and Eurex Exchange Asia Pte. Ltd are corporate entities and are registered under Singapore law. Eurex Frankfurt AG (Eurex) is the administrating and operating institution of Eurex Deutschland. Eurex Deutschland is in the following referred to as "Eurex Exchange".

All intellectual property, proprietary and other rights and interests in this publication and the subject matter hereof (other than certain trademarks and service marks listed below) are owned by DBAG and its affiliates and subsidiaries including, without limitation, all patent, registered design, copyright, trademark and service mark rights. While reasonable care has been taken in the preparation of this publication to provide details that are accurate and not misleading at the time of publication DBAG, Clearstream, Eurex, Eurex Clearing, Eurex Repo as well as Eurex Exchange and their respective servants and agents (a) do not make any representations or warranties regarding the information contained herein, whether express or implied, including without limitation any implied warranty of merchantability or fitness for a particular purpose or any warranty with respect to the accuracy, correctness, quality, completeness or timeliness of such information, and (b) shall not be responsible or liable for any third party's use of any information contained herein under any circumstances, including, without limitation, in connection with actual trading or otherwise or for any errors or omissions contained in this publication.

This publication is published for information purposes only and shall not constitute investment advice respectively does not constitute an offer, solicitation or recommendation to acquire or dispose of any investment or to engage in any other transaction. This publication is not intended for solicitation purposes but only for use as general information. All descriptions, examples and calculations contained in this publication are for illustrative purposes only.

Eurex and Eurex Clearing offer services directly to members of Eurex Exchange respectively to clearing members of Eurex Clearing. Those who desire to trade any products available on the Eurex market or who desire to offer and sell any such products to others or who desire to possess a clearing license of Eurex Clearing in order to participate in the clearing process provided by Eurex Clearing, should consider legal and regulatory requirements of those jurisdictions relevant to them, as well as the risks associated with such products, before doing so.

Only Eurex derivatives that are CFTC-approved may be traded via direct access in the United States or by United States persons. A complete, up-to-date list of Eurex derivatives that are CFTC-approved is available at: <http://www.eurexexchange.com/exchange-en/products/eurex-derivatives-us>. In addition, Eurex representatives and participants may familiarise U.S. Qualified Institutional Buyers (QIBs) and broker-dealers with certain eligible Eurex equity options and equity index options pursuant to the terms of the SEC's July 1, 2013 Class No-Action Relief. A complete, up-to-date list of Eurex options that are eligible under the SEC Class No-Action Relief is available at: <http://www.eurexexchange.com/exchange-en/products/eurex-derivatives-us/eurex-options-in-the-us-for-eligible-customers>. Lastly, U.S. QIBs and broker-dealers trading on behalf of QIBs may trade certain single-security futures and narrow-based security index futures subject to terms and conditions of the SEC's Exchange Act Release No. 60,194 (June 30, 2009), 74 Fed. Reg. 32,200 (July 7, 2009) and the CFTC's Division of Clearing and Intermediary Oversight Advisory Concerning the Offer and Sale of Foreign Security Futures Products to Customers Located in the United States (June 8, 2010).

Trademarks and Service Marks

Buxl®, DAX®, DivDAX®, eb.rexx®, Eurex®, Eurex Repo®, Eurex Strategy WizardSM, Euro GC Pooling®, FDAX®, FWB®, GC Pooling®, GCPI®, MDAX®, ODAX®, SDAX®, TecDAX®, USD GC Pooling®, VDAX®, VDAX-NEW® and Xetra® are registered trademarks of DBAG.

All MSCI indexes are service marks and the exclusive property of MSCI Barra.

ATX®, ATX® five, CECE® and RDX® are registered trademarks of Vienna Stock Exchange AG.

IPD® UK Quarterly Indexes are registered trademarks of Investment Property Databank Ltd. IPD and have been licensed for the use by Eurex for derivatives.

SLI®, SMI® and SMIM® are registered trademarks of SIX Swiss Exchange AG.

The STOXX® indexes, the data included therein and the trademarks used in the index names are the intellectual property of STOXX Limited and/or its licensors. Eurex derivatives based on the STOXX® indexes are in no way sponsored, endorsed, sold or promoted by STOXX and its licensors and neither STOXX nor its licensors shall have any liability with respect thereto.

Bloomberg Commodity IndexSM and any related sub-indexes are service marks of Bloomberg L.P.

PCS® and Property Claim Services® are registered trademarks of ISO Services, Inc.

Korea Exchange, KRX, KOSPI and KOSPI 200 are registered trademarks of Korea Exchange Inc.

The names of other companies and third party products may be trademarks or service marks of their respective owners.

Table of Contents

1.	Introduction	4
1.1	Intended Audience	4
1.2	Connectivity	4
1.3	Enhanced security features	4
1.3.1	Network security	4
1.4	Browser requirements	5
2.	Ordering Certificates	7
3.	Appendix A – URL overview	10
4.	Appendix B – Support information	11
5.	Appendix D – Browser setup details	13
5.1	Internet Explorer	13
5.2	Firefox	15
5.3	Google Chrome	18
6.	Change log	21

1. Introduction

This document describes the required technical measures to be able to login and use the Eurex Clearing GUIs.

- C7 Clearing GUI
- EurexOTC Clear GUI
- EurexOTC Clear Margin Calculator GUI
- Securities Clearing GUI

1.1 Intended Audience

For a successful setup the Member's IT department should take note of this document.

1.2 Connectivity

Basically, access to the Eurex Clearing GUIs is available via

- Internet
- GUI channel on leased lines

To access the C7 Clearing GUI it is necessary to request access to C7 beforehand.

All details (Technical access / Interfaces to Eurex Clearing / Clearing system usage fees) can be found on the Eurex Clearing webpage: <http://www.eurexclearing.com> > Technology > Connectivity alternatives

1.3 Enhanced security features

For the Clearing Web GUI a two factor authentication is implemented:

- 1st factor: Certificate authentication - used to secure the connection between the Member and Eurex Clearing on a Business Unit level (**MemberID level**). The certificates are also used to distinguish between the simulation and production environments.
- 2nd factor: Username and password authentication - used to login to the Eurex Clearing Web GUI Services (**UserID level**).

For the C7 Service, a third factor is implemented as well, which is based on network addresses.

1.3.1 Network security

The feature is currently completely configurable and activated only for the C7 Clearing GUI.

For the connection via Internet the Member can choose one of the following options:

- Allow Internet access without restrictions (default)
- Completely disable Internet access
- Allow Internet access for certain IP addresses given by the Member

Internet access: Per default any user of the given Member is permitted to access the application from any IP address. If the Member wants to restrict the default access, a list of IP addresses can be entered in the Member Section. Then it will only be possible to access the

application from these explicitly stated IP addresses. Internet access for the given Member can be completely blocked by setting the corresponding radio-button.

Eurex Clearing GUIs Network Configuration

Internet Access: enabled disabled

Network Data

Add Row Remove Row

IP Address
10.131.8.137
10.239.13.52
10.239.14.38

Leased Line access: Eurex Clearing allows access from the Member leased line networks and from any associated Service Provider respectively.

For the connection via leased line the GUI is checking the incoming IP address against the known network information for the corresponding Member.

In case a Member connects through a Service Provider, the IP address is also checked against the known networks of the Service Provider.

This implies that any Service Provider relationship needs to be maintained correctly in the Member Section if the Member is accessing any of the Eurex Clearing GUIs via the network of a Service Provider.

The relationships can be registered via "Technical Connection / Requests & Configuration / New Request / Provider / New Provider / GUI Channel".

1.4 Browser requirements

In order to connect successfully to the Eurex Clearing GUIs and to ensure a smooth service it is recommended to use one of the following web browsers to connect to the GUI:

- Firefox Latest ESR (extended support release). Usage of Firefox is strongly recommended.
- MS Internet Explorer 11 or higher
- Google Chrome

The required browser settings are:

- Enable session cookie handling
- Allow JavaScript execution
- Support security protocols TLS 1.0, TLS 1.1 and TLS 1.2
- IT-Security Patches are highly recommended.

Note: See "Appendix D – Browser setup details" for further information about browser settings.

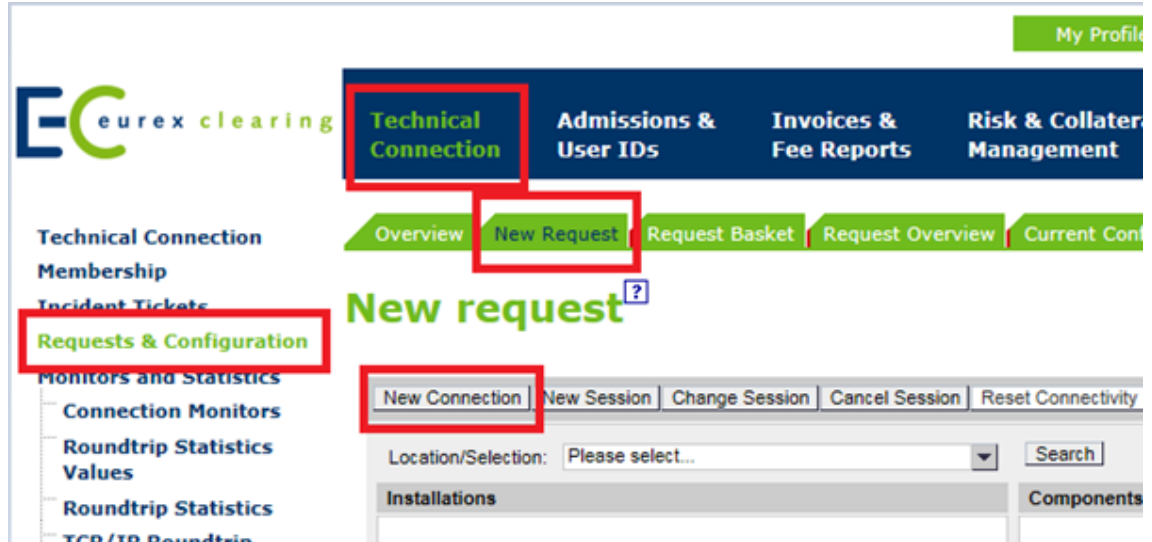
Introduction

Note: The network proxy settings must be configured according to the local network rules given at the Member-side.

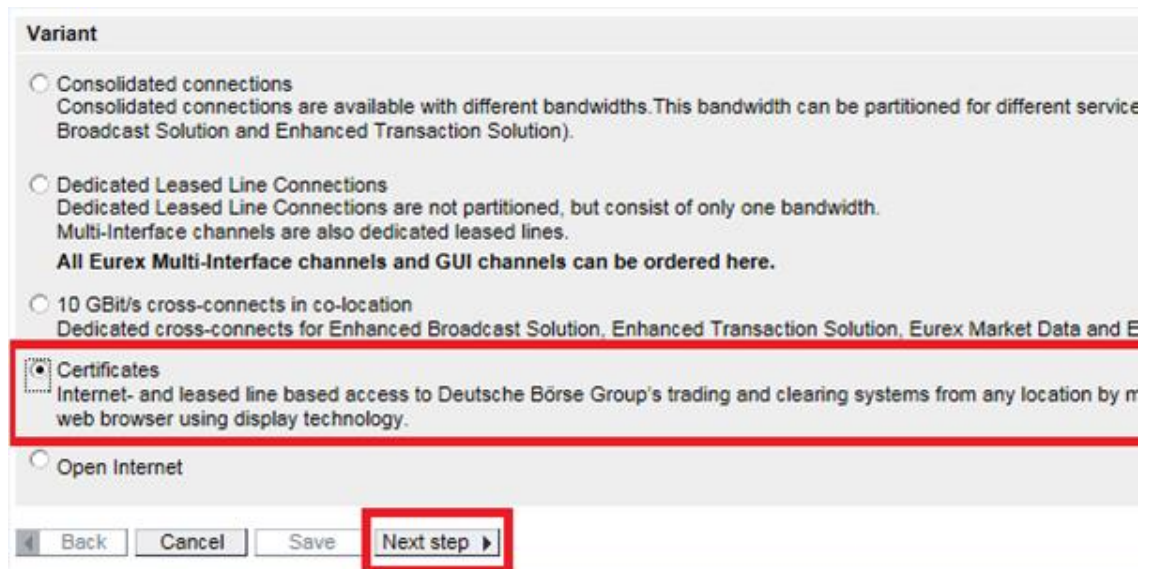
Ordering Certificates

2. Ordering Certificates

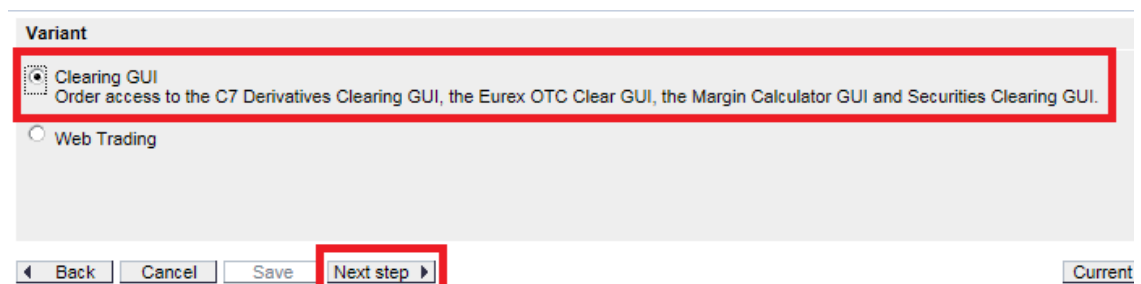
On the Member Section, go to Technical Connection / Requests & Configuration / New Request / New Connection:



Choose option “Certificates” and click on “Next Step”:



Choose option “Clearing GUI” and click on “Next Step”:



Ordering Certificates

Select the contact, MemberID, and environment and then click on “Next”:

Select Clearing GUI Certificate Contact

Name:
 Phone:
 Email:

Select member ID

Member ID:

Select environment

Note: If you click both environments, you will get a separate certificate for each environment.

Market/Service	Member ID	Production	Simulation
Eurex Clearing GUI		<input type="checkbox"/>	<input type="checkbox"/>

Notice: Clearing GUI Certificates will expire after two years.

Check the overview and click on “Add to request basket”. **Please note that this creates only a “draft request”. Your request will still need to be approved by someone with approval rights. All Central Coordinators automatically have this right. It can also be assigned to other Member Section users.**

Once the certificate has been created by Eurex Clearing, an e-mail notification will be sent. The e-mail will include the password for the certificate, which is needed when you upload the certificate into your user’s browser.

On the Member Section, go to Technical Connection / Requests & Configuration / Current Configuration and select “GUI Certificates” from the drop down menu in the Location/Selection area, to view the Eurex Clearing GUI certificate(s):

Eurex Clearing

Technical Connection | Admissions & User IDs | Invoices & Fee Reports | Risk & Collateral Management | Technology | Clearing Resources

Technical Connection | Overview | New Request | Request Basket | Request Overview | **Current Configuration** | Support Box

Current configuration

Location/Selection: Search

- GUI Certificates
- Eurex Clearing GUI**

CERTIFICATE: 1064859-PAKFR_CLEARPROD_001

In order to find a particular certificate, please click on the actual certificate name in the right-side window. You will then find the “Download” button for the certificate, just like in the screenshot below:

Ordering Certificates

Location/Selection: GUI Certificates

- GUI Certificates
- Eurex Clearing GUI

- CERTIFICATE: 1064859-PAKFR_CLEARPROD_001

Details Clearing GUI

User ID:

Certificate Type: Valid to:

Environment: Member ID:

Please note that the validity expiration of a certificate does not automatically affect the validity of an account. The invoicing for accounts continues to be performed according to the current price list.:

Certificate	
Date of Upload	Name of Certificate
26.09.2016	! [REDACTED]

LSM			
Connection Type	Market	Member ID	Line ID (Billing ID)
Certificate	Eurex Clearing GUI	PAKFR	170332

Download and save the certificate at a secure location.

Upload the certificate into the browser of the GUI user. For example, if you are using Internet Explorer, you would go to Settings / Internet options / Content / Certificates / Import. Please note that you will be prompted to enter the password that you have received in the before-mentioned e-mail.

Once you have uploaded the certificate into the browser, you can log into the respective GUI.

3. Appendix A – URL overview

Service	Internet	Leased Line
C7 Clearing GUI Simulation	https://simulation.eurexclearing.com:9443/C7_GUI/	https://simulation.vpn.eurexclearing.com:9443/C7_GUI/
C7 Clearing GUI Production	https://production.eurexclearing.com:8443/C7_GUI/	https://production.vpn.eurexclearing.com:8443/C7_GUI/
EurexOTC Clear GUI Simulation	https://simulation.eurexclearing.com:9443/OTC_GUI/	https://simulation.vpn.eurexclearing.com:9443/OTC_GUI/
EurexOTC Clear GUI Production	https://production.eurexclearing.com:8443/OTC_GUI/	https://production.vpn.eurexclearing.com:8443/OTC_GUI/
EurexOTC Clear Margin Calculator GUI Simulation	https://simulation.eurexclearing.com:9443/Margin_Calculator/	https://simulation.vpn.eurexclearing.com:9443/Margin_Calculator/
EurexOTC Clear Margin Calculator GUI Production	https://production.eurexclearing.com:8443/Margin_Calculator/	https://production.vpn.eurexclearing.com:8443/Margin_Calculator/
Securities Clearing GUI Simulation	https://simulation.eurexclearing.com:9443/LOGIN_GUI/	https://simulation.vpn.eurexclearing.com:9443/LOGIN_GUI/
Securities Clearing GUI Production	https://production.eurexclearing.com:8443/LOGIN_GUI/	https://production.vpn.eurexclearing.com:8443/LOGIN_GUI/

Note: IP-addresses

- Production/Leased Line access IP-address 193.29.93.171
- Simulation/Leased Line access IP-address 193.29.93.172
- Production/Internet Line access IP-address 193.29.90.161
- Simulation/Internet Line access IP-address 193.29.90.162

More details about the networks and the IP-addresses is to be found in “Eurex Exchange and Eurex Clearing Network Access Manual”. The corresponding manual for C7 can be found at www.eurexclearing.com → Technology → Eurex Clearing’s C7 → System documentation.

4. Appendix B – Support information

- **Member Section**

Technical support is available under:

Phone: +49 (0) 69- 21 1 –1 78 88

E-Mail: member.section@eurexclearing.com

- **Customer Technical Support**

Support for all technical issues is available under:

Phone: +49 (0) 69- 21 1 – <TKAM VIP Number per Client>

Fax: +49 (0) 69- 21 1 11201

E-Mail: cts@deutsche-boerse.com

- **C7 Clearing GUI**

For C7 Clearing GUI related questions a hotline is available under:

Phone: +49(0)69-211-1 12 50

Fax: +49 (0) 69-211- 1 43 34

E-Mail: clearing@eurexclearing.com

- **EurexOTC Clear GUI**

For general OTC IRS related questions the EurexOTC Clear Hotline is available under:

Phone: +49(0)69-211-1 28 28

Fax: +49 (0) 69-211-61 28 28

E-Mail: OTCClear@eurexclearing.com

For general OTC IRS simulation related questions, the EurexOTC Clear Simulation Hotline is available from Monday to Friday, 10:00 – 18:00 CET.

Phone: +49(0)69-211-1 25 25

Fax: +49 (0) 69-211-61 25 25

E-Mail: OTCClear.simulation@eurexclearing.com

- **EurexOTC Clear Margin Calculator GUI**

For general Margin Calculator related questions the EurexOTC Clear Hotline is available.

EurexOTC Clear Hotline (**Production**)

Service times: 08:00 - 22:00 CET (Monday – Friday)

Phone: +49 (0) 69-211-1 28 28

Fax: +49 (0) 69-211-61 28 28

E-Mail: OTCClear@eurexclearing.com

Appendix B – Support information

For general simulation related questions the EurexOTC Clear Simulation Hotline is available.

EurexOTC Clear Hotline (**Simulation**)

Service times: 10:00 - 18:00 CET (Monday – Friday)

Phone: +49 (0) 69-211-1 25 25

Fax: +49 (0) 69-211-61 25 25

E-Mail: OTCClear.simulation@eurexclearing.com

5. Appendix D – Browser setup details

5.1 Internet Explorer

The provided examples are relevant for Microsoft Internet Explorer 11.

- **Enable session cookie handling:**

1. Click on the **Tools** menu.
2. Select **Internet Options** in the menu - a new window opens.
3. Click on the **Privacy** tab near the top of the window.
4. Click on the **Advanced** button of the window.
5. Select the Option **Override automatic cookie handling** and choose **Accept** for First- and Third-party Cookies.
6. Save changes by clicking **OK**.

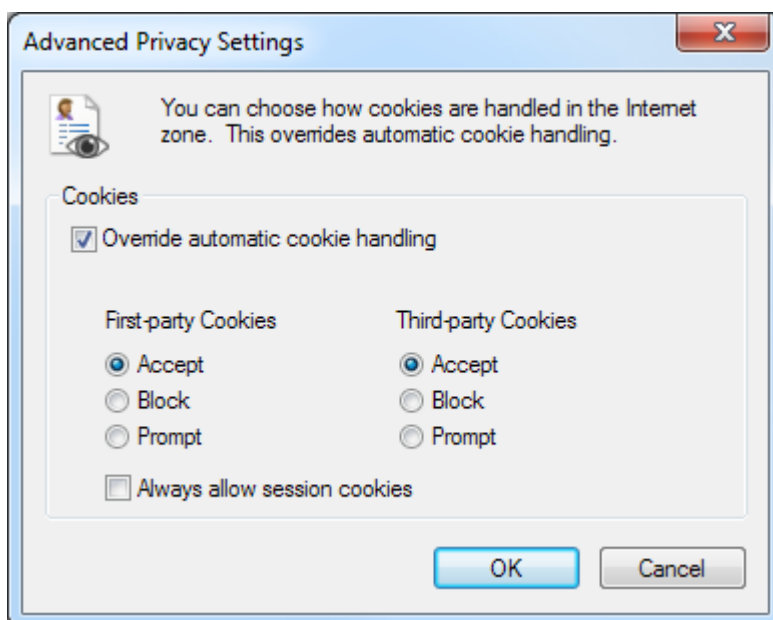


Figure 1: Advanced Privacy Settings (Cookie handling) for Internet Explorer

- **Allow Javascript execution**

1. In **Tools**, click **Internet Options**, and then click on **Security** tab.
2. Click the **Internet** zone and choose **Custom Level**.
3. Set the corresponding settings as shown below and click **OK**.

Appendix D – Browser setup details

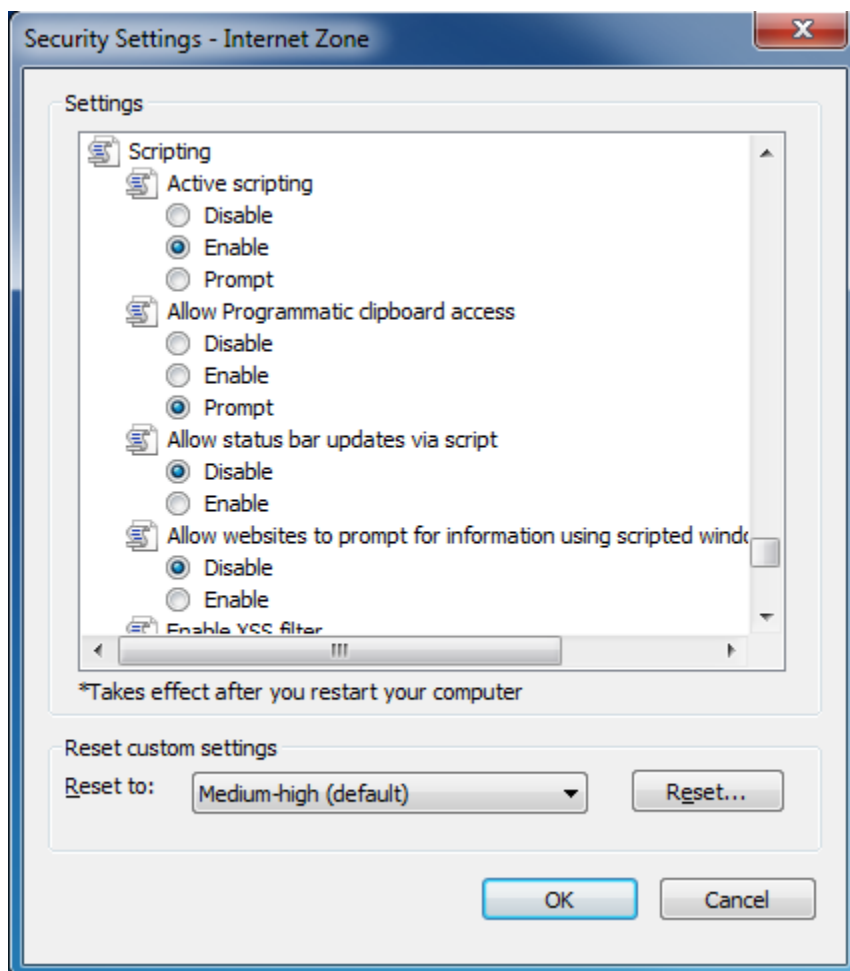


Figure 2: Configuration of Security Settings for Internet Explorer

Note: To allow scripting on one special website only and to leave scripting disabled in the Internet zone, add this one website to the trusted sites zone.

Appendix D – Browser setup details

- **Support security protocols TLS 1.0, TLS 1.1 and TLS 1.2**

The below settings can be set as follows.

1. On the **Tools** menu, click **Internet Options**.
2. On the **Advanced** tab under **Security** the following boxes must be ticked:
 - Use TLS 1.0
 - Use TLS 1.1
 - Use TLS 1.2
3. Click **Apply**, and then click **OK**.

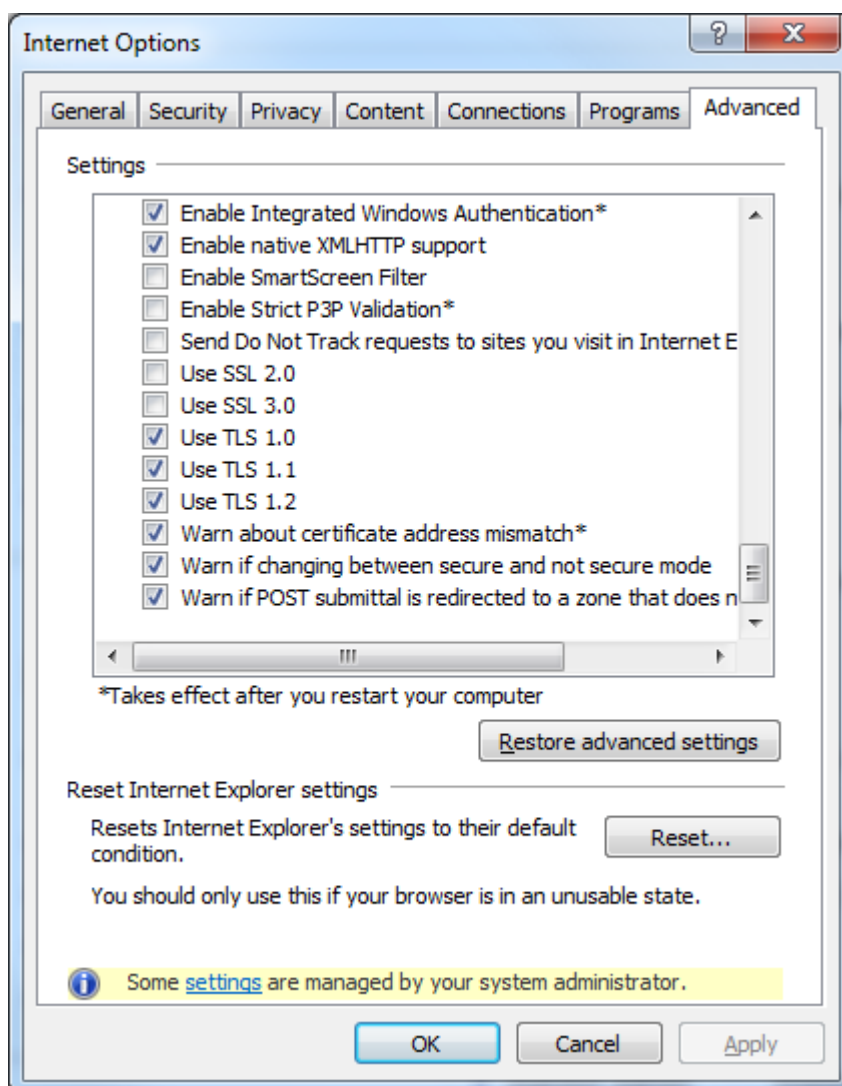


Figure 3: Enabling secured transport protocols for Internet Explorer

5.2 Firefox

- **Enable session cookie handling**

Cookies are enabled by default in Firefox.

1. At the top of the Firefox window, click on the Firefox button and then click **Options**.
2. Select the **Privacy** panel.

Appendix D – Browser setup details

3. Under History: Select Use custom settings for history from dropdown menu.
4. Tick Accept cookies from sites to enable Cookies, and untick it to disable them.

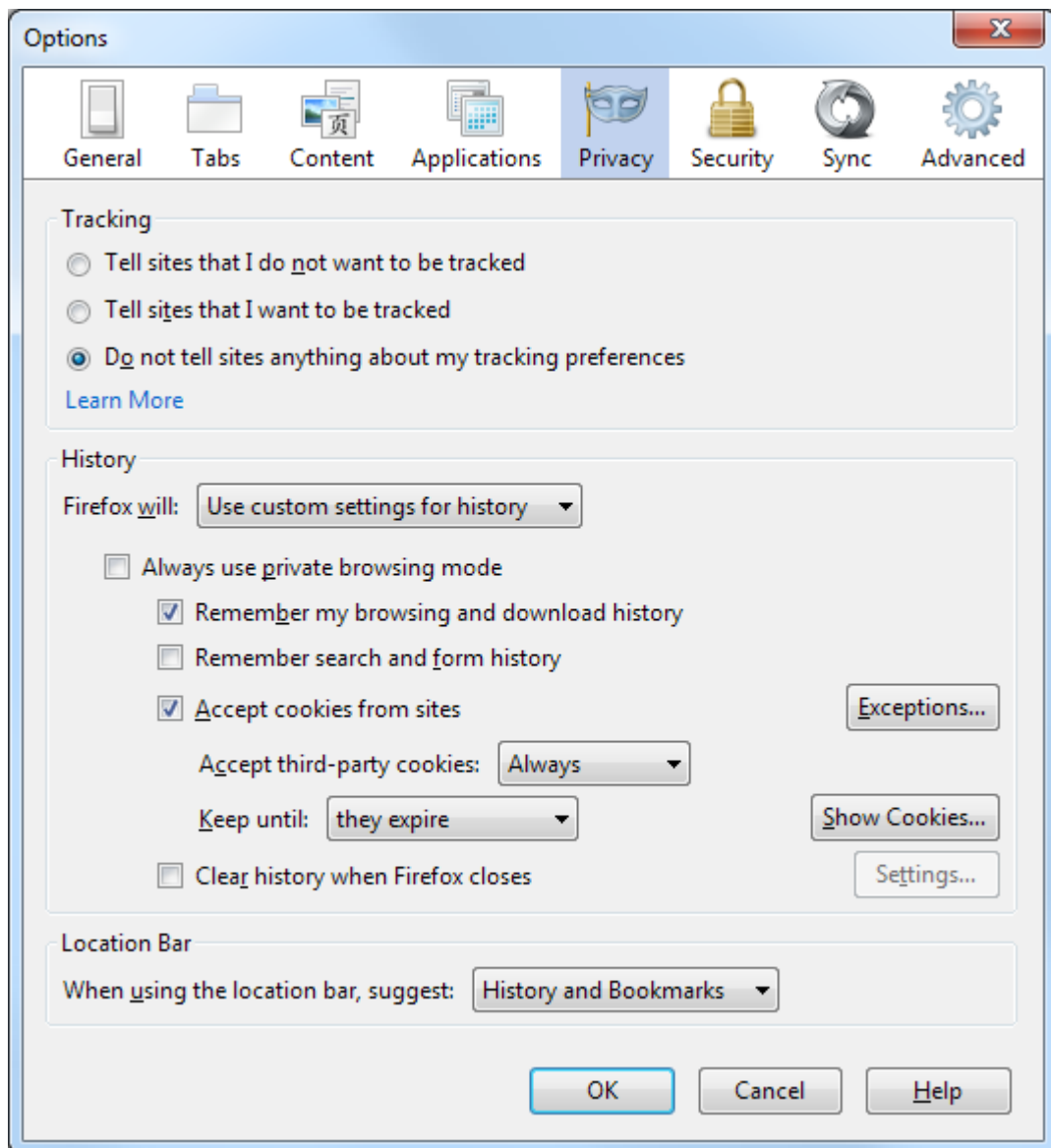


Figure 4: Cookie handling for Firefox

Choose how long cookies are allowed to be stored:

- Keep until: *they expire*: Each cookie will be removed when it reaches its expiration date, which is set by the site that sent the cookie.
- Keep until: *I close Firefox*: The cookies that are stored will be removed when Firefox is closed.

- **Allow JavaScript execution**

JavaScript execution must be enabled in the Firefox Browser. This is a default setting in newer Firefox versions. It can be checked by entering about :config directly into the Firefox browser as shown below.

Appendix D – Browser setup details

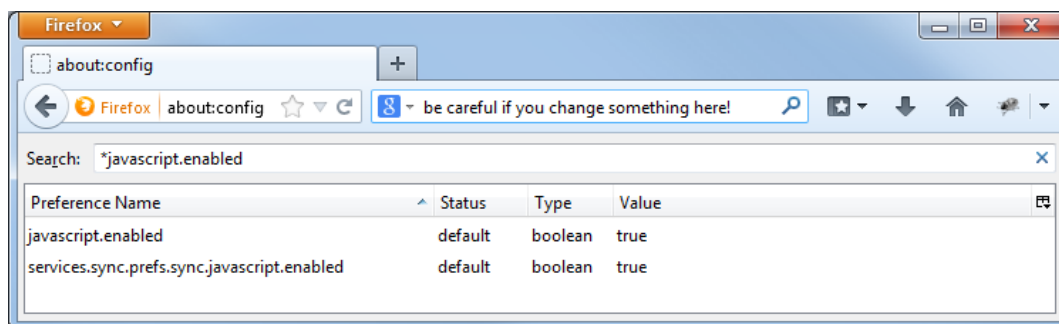


Figure 5: Checking if JavaScript execution is enabled for Firefox

In some older Firefox versions JavaScript execution must be enabled manually (see the example below).

1. In the Options window, select the Content tab.
2. Check box Enable JavaScript: Select this option to permit the execution of JavaScripts.

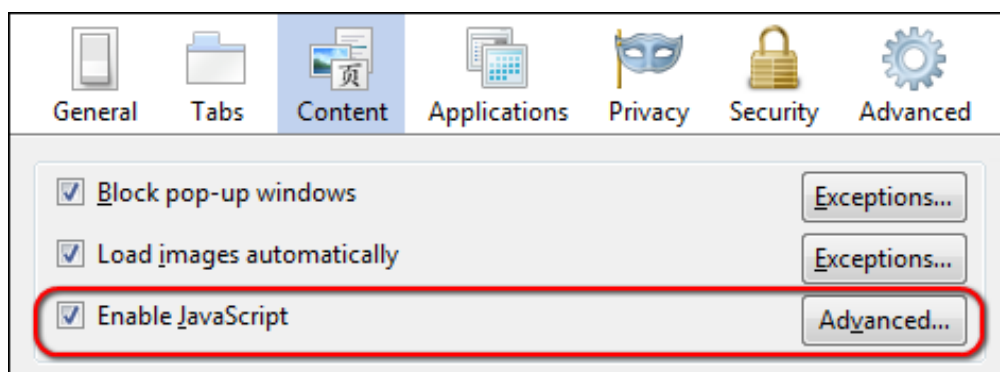


Figure 6: Enabling of JavaScript for Firefox

- **Support security protocols TLS 1.0, TLS 1.1 and TLS 1.2**

In newer Firefox versions TLS protocols are being used per default.

In older Firefox versions the usage of TLS 1.0 must be set explicitly (see the example below).

The below settings must be set correctly.

1. On the Control Panel click **Options**.
2. On the Advanced tab under Encryption make sure that the following box is ticked:
 - Use TLS 1.0
3. Click **Apply**, and then click **OK**.

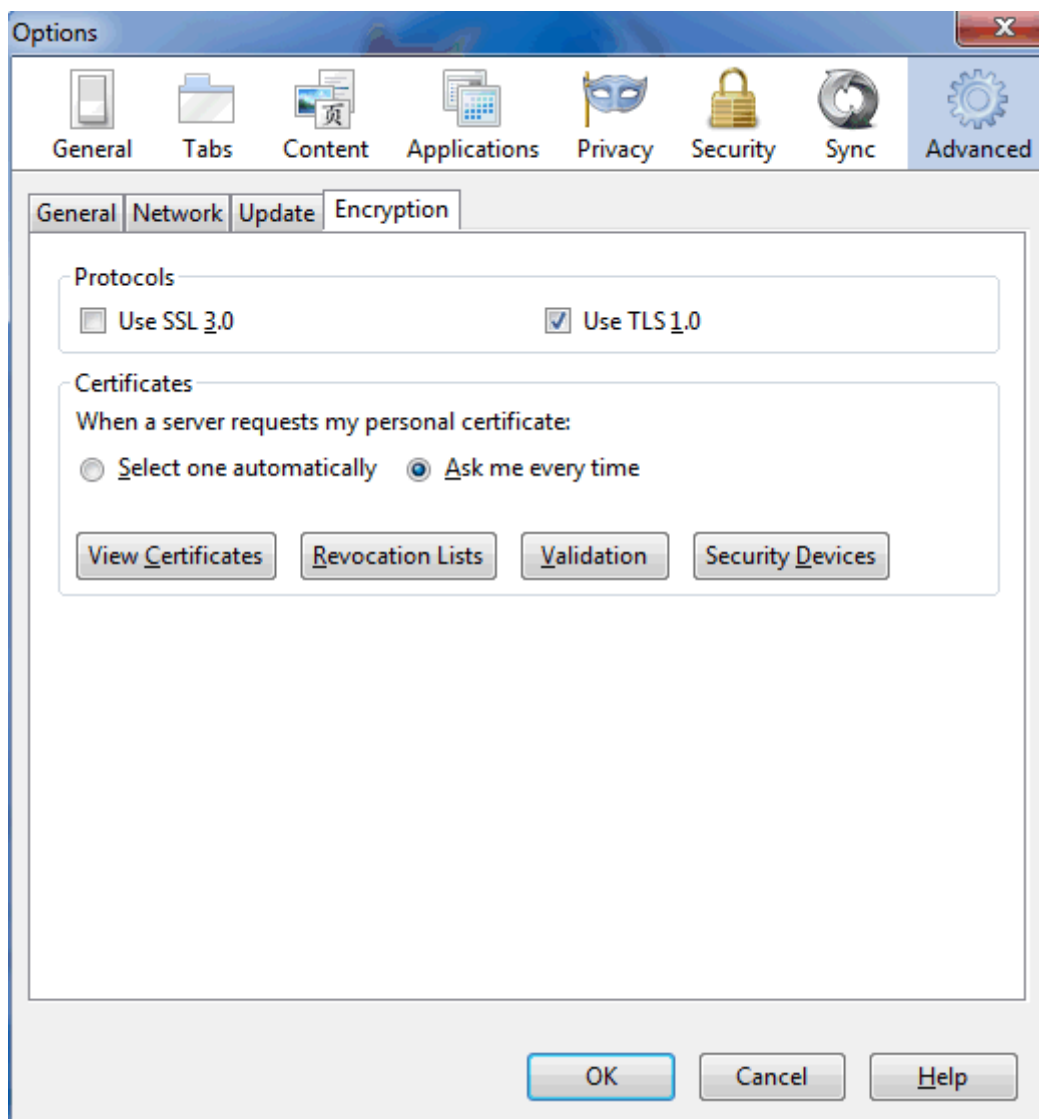


Figure 7: Enabling secured transport protocols for Firefox

5.3 Google Chrome

- **Enable session cookie handling**

Cookies are usually enabled per default in Google Chrome. This can be checked by entering `chrome://settings/content` directly into the browser as shown below.

Appendix D – Browser setup details

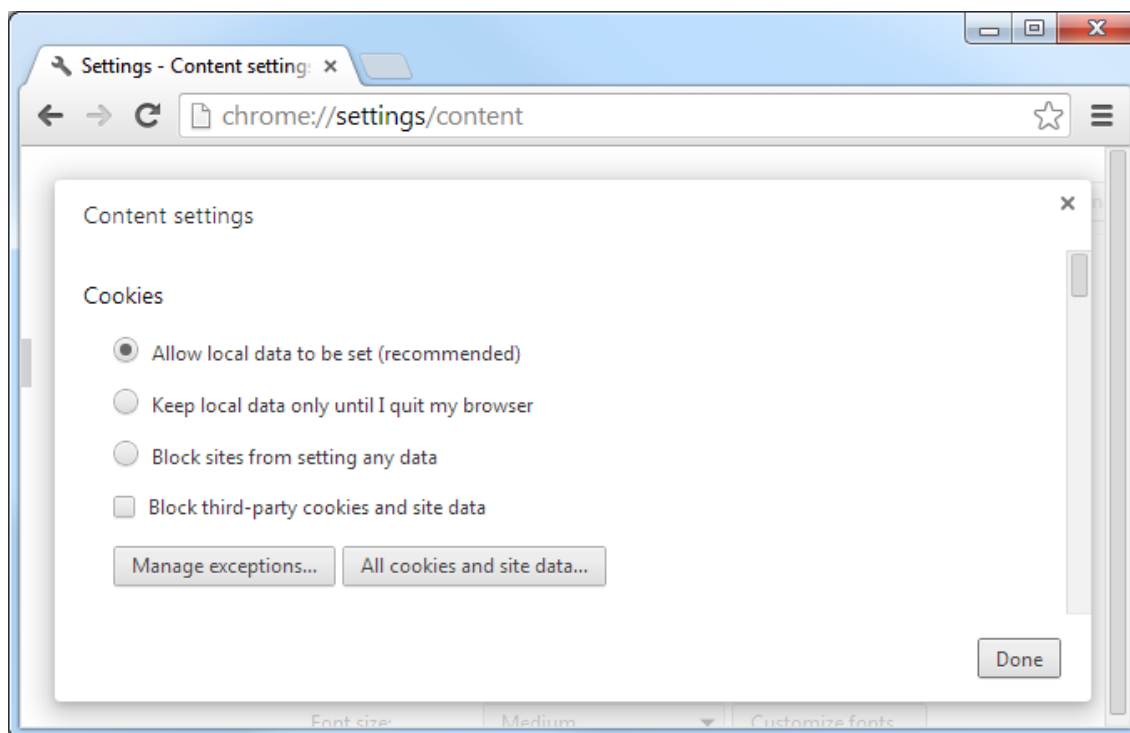


Figure 8: Enabling cookies for Google Chrome

- **Allow JavaScript execution**

JavaScript is usually enabled per default in Google Chrome. This can be checked by entering `chrome://settings/content` directly into the browser as shown below.

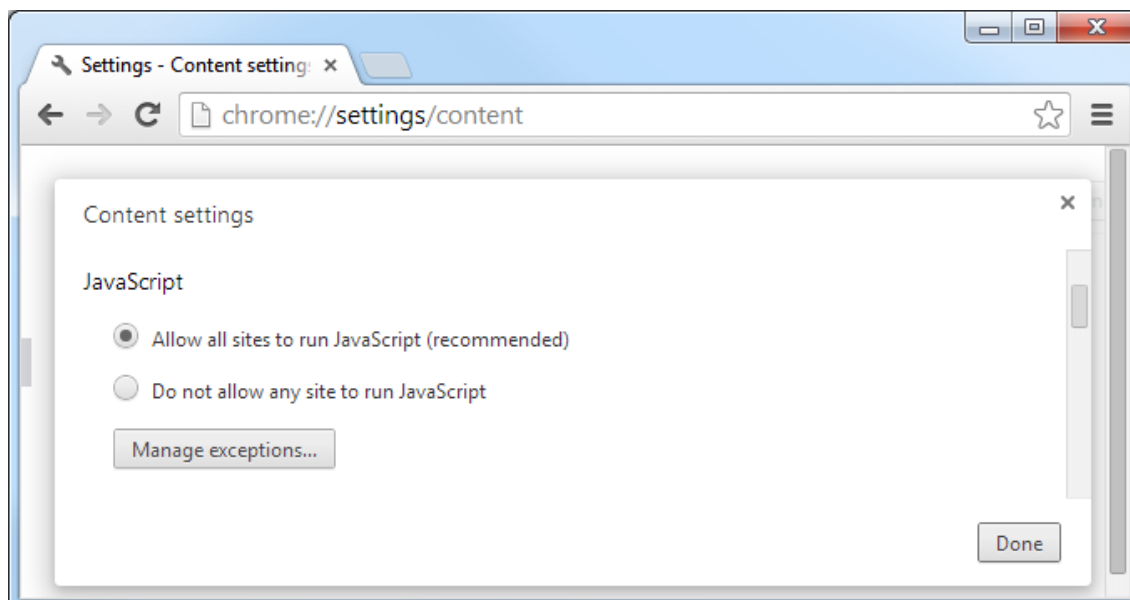


Figure 9: Enabling of JavaScript for Google Chrome

- **Support security protocols TLS 1.0, TLS 1.1 and TLS 1.2**

1. On the Control Panel click **Internet Options**.
2. On the Advanced tab under Security, make sure that the following box is ticked:

Appendix D – Browser setup details

- Use TLS 1.0
- Use TLS 1.1
- Use TLS 1.2

3. Click Apply, and then click **OK**.

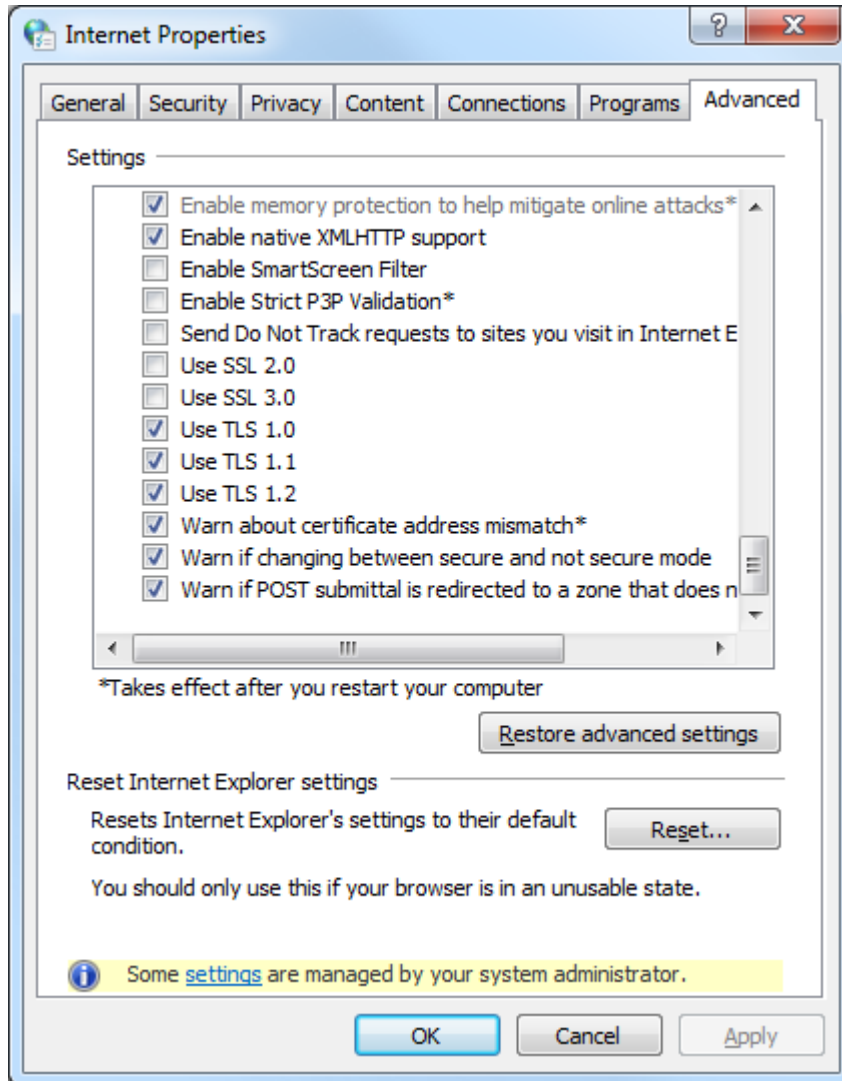


Figure 10: Enabling secured transport protocols for Google Chrome

Change log

6. Change log

Major changes applied to this document after the last version has been published.

Version	Date	Change
3.2	21.03.2016	IP Address web application
3.3	26.06.2017	C7 release 4.0 update
3.4	28.05.2019	Updated list of browsers
