



Eurex Clearing C7

C7 - Collateral Management Functional Reference Guide

Document version C7 Release 9.0

- Simulation valid from 12 September 2022
- Production valid from 21 November 2022

Change History

Date	Change
26 June 2017	Initial version
30 July 2018	Update of Segregation models (chapter 4) Changes valid from 6 August / 17 September 2018
27 August 2018	Update of Cash deposits (chapter 7.1.1). Changes valid from 3 September / 22 October 2018
22 February 2019	Update of collateral transfer instructions by optional using a "Future Value Date" (chapter 7.)
08 April 2019	Update to account for: (i) Introduction of optional "Future Value Date" for collateral transactions (chapter 7.) (ii) Re-activation of PCB in USD (iii) Introduction of LSOC
16 September 2019	Update of automated processing of Permanent Cash Holdings for USD
01 April 2020	Update
04 August 2020	Update to account for introduction of Excess Collateral Pool

Date	Release	Change
25 January 2021	7.1	Update to account for optional additional cash account for intraday margin calls for Basic Clearing Members
28 June 2021	8.0	No update for C7 Release 8.0
07 September 2021	8.1	No update for C7 Release 8.1
02 March 2022	8.1	Update for Access Model Naming Harmonization and Type of Money
06 May 2022	9.0	Update for C7 Release 9.0 introduction of type of money "CALL" for intraday margin call

© Eurex 2022

Deutsche Börse AG ("DBAG"), Clearstream Banking AG ("Clearstream"), Eurex Frankfurt AG ("Eurex"), Eurex Clearing AG ("Eurex Clearing"), Eurex Securities Transactions Services GmbH ("Eurex STS") and Eurex Repo GmbH ("Eurex Repo") are corporate entities and are registered under German law. Eurex Global Derivatives AG is a corporate entity and is registered under Swiss law. Clearstream Banking S.A. is a corporate entity and is registered under Luxembourg law. Eurex Frankfurt AG is the administrating and operating institution of Eurex Deutschland. Eurex Deutschland is in the following also referred to as the "Eurex Exchange".

All intellectual property, proprietary and other rights and interests in this publication and the subject matter hereof (other than certain trademarks and service marks listed below) are owned by DBAG or its affiliates and subsidiaries or used under authorization by their respective owners, including, without limitation, all patent, registered design, copyright, trademark and service mark rights. While reasonable care has been taken in the preparation of this publication to provide details that are accurate and not misleading at the time of publication DBAG, Clearstream, Eurex, Eurex Clearing, Eurex Repo as well as the Eurex Exchange and their respective subsidiaries, servants and agents (a) do not make any representations or warranties regarding the information contained herein, whether express or implied, including without limitation any implied warranty of merchantability or fitness for a particular purpose or any warranty with respect to the accuracy, correctness, quality, completeness or timeliness of such information, and (b) shall not be responsible or liable for any third party's use of any information contained herein under any circumstances, including, without limitation, in connection with actual trading or otherwise or for any errors or omissions contained in this publication.

This publication is published for information purposes only and shall not constitute investment advice respectively does not constitute an offer, solicitation or recommendation to acquire or dispose of any investment or to engage in any other transaction. This publication is not intended for solicitation purposes but only for use as general information. All descriptions, examples and calculations contained in this publication are for illustrative purposes only.

Eurex and Eurex Clearing offer services directly to members of the Eurex Exchange respectively to clearing members of Eurex Clearing. Those who desire to trade any products available on the Eurex market or who desire to offer and sell any such products to others or who desire to possess a clearing license of Eurex Clearing in order to participate in the clearing process provided by Eurex Clearing, should consider legal and regulatory requirements of those jurisdictions relevant to them, as well as the risks associated with such products, before doing so.

Only Eurex derivatives that are CFTC-approved may be traded via direct access in the United States or by United States persons. A complete, up-to-date list of Eurex derivatives that are CFTC-approved is available at: <https://www.eurex.com/ex-en/rules-regs/eurex-derivatives-us/direct-market-access-from-the-us>.

In addition, Eurex representatives and participants may familiarize U.S. Qualified Institutional Buyers (QIBs) and broker-dealers with certain eligible Eurex equity options and equity index options pursuant to the terms of the SEC's July 1, 2013 Class No-Action Relief. A complete, up-to-date list of Eurex options that are eligible under the SEC Class No-Action Relief is available at:

<https://www.eurex.com/ex-en/rules-regs/eurex-derivatives-us/eurex-options-in-the-us-for-eligible-customers>. Lastly, U.S. QIBs and broker-dealers trading on behalf of QIBs may trade certain

single-security futures and narrow-based security index futures subject to terms and conditions of the SEC's Exchange Act Release No. 60,194 (June 30, 2009), 74 Fed. Reg. 32,200 (July 7, 2009) and the CFTC's Division of Clearing and Intermediary Oversight Advisory Concerning the Offer and Sale of Foreign Security Futures Products to Customers Located in the United States (June 8, 2010).

Trademarks and Service Marks

Buxl®, DAX®, DivDAX®, eb.rexx®, Eurex®, Eurex Repo®, Strategy Wizard, Euro GC®, FDAX®, FTSE 100, FWB®, GC Pooling®, GCPI®, MDAX®, ODAX®, SDAX®, TecDAX®, USD GC Pooling®, VDAX®, VDAX-NEW® and Xetra® are registered trademarks of DBAG or its affiliates and subsidiaries. All MSCI indexes are service marks and the exclusive property of MSCI Barra. ATX®, ATX® five, CECE® and RDX® are registered trademarks of Vienna Stock Exchange AG. IPD® UK Quarterly Indexes are registered trademarks of Investment Property Databank Ltd. IPD and have been licensed for the use by Eurex for derivatives. SLI®, SMI® and SMIM® are registered trademarks of SIX Swiss Exchange AG. The STOXX® indexes, the data included therein and the trademarks used in the index names are the intellectual property of STOXX Limited and/or its licensors. Eurex derivatives based on the STOXX® indexes are in no way sponsored, endorsed, sold or promoted by STOXX and its licensors and neither STOXX nor its licensors shall have any liability with respect thereto. PCS® and Property Claim Services® are registered trademarks of ISO Services, Inc. Korea Exchange, KRX, KOSPI and KOSPI 200 are registered trademarks of Korea Exchange Inc. The names of other companies and third-party products may be trademarks or service marks of their respective owners.

FTSE® is a trade mark of the London Stock Exchange Group companies and is used by FTSE International Limited ("FTSE") under license. All rights in the FTSE®100 Index (the "Index") vest in FTSE or its licensors. Neither FTSE nor any of their affiliates or licensors (a) assumes any liability, losses, damages, expenses or obligations in connection with any derivative product based on the Index; or (b) accepts any liability for any errors or omissions, fitness for a particular purpose or the results to be obtained from the use of the Index or related data. No party may rely on the Index or related data contained in this communication which Index and data is owned by FTSE or their affiliates. No use or distribution of the Index is permitted without FTSE's express written consent. FTSE does not promote, sponsor or endorse the content of this communication nor any financial or derivative product that it relates to.

PRIIPs: Eurex Deutschland qualifies as manufacturer of packaged retail and insurance-based investment products (PRIIPs) under Regulation (EU) No 1286/2014 on key information documents for packaged retail and insurance-based investment products (PRIIPs Regulation), and provides key information documents (KIDs) covering PRIIPs traded on Eurex Deutschland on its website under the following link: <https://www.eurex.com/ex-en/rules-regs/priips-kids>.

In addition, according to Art. 14(1) PRIIPs Regulation the person advising on, or selling, a PRIIP shall provide the KID to retail investors free of charge.

Table of Contents

Abbreviations	6
1 Introduction	7
1.1 Audience	7
1.2 Conventions used in this document	7
2 Interfaces	8
2.1 C7 Clearing GUI for collateral management services	8
2.2 System time	8
3 Client asset protection and collateral pool concept	9
4 Segregation models	10
4.1 Omnibus Segregated Account (OSA)	10
4.2 Individually Segregated Accounts (ISA)	11
4.2.1 Individual Segregated Account (ISA) for DCs	12
4.2.2 Fund Manager set-up	12
4.3 LSOC segregation model	14
5 Collateral management roles: pool sponsor versus pool owner	16
6 Entitlement	17
6.1 Overview	17
6.2 Roles and privileges	17
6.3 General set-up and maintenance	17
6.4 Four-eyes principle processing	19
6.4.1 Four-eyes principle processing for entitlement settings	19
6.4.2 Four-eyes principle processing for collateral management features	19
7 Collateral management	20
7.1 Cash collateral	20
7.1.1 Cash deposits	21
7.1.2 Cash withdrawals	21
7.1.3 Permanent Cash Balance for EUR, CHF and GBP	22
7.1.4 Permanent Cash Holding for USD	22
7.1.5 Excess Collateral Pool	22
7.1.6 Optional additional cash account for intraday margin calls for Basic Clearing Members	23
7.2 Securities collateral	25
7.2.1 Security deposit	25
7.2.2 Security withdrawal	25
7.3 Claims	25
7.3.1 Claim increase	25
7.3.2 Claim decrease	26
8 Multiple transaction processing: Bulk upload	27

9	Collateral evaluation / Excess and shortfall	28
10	Inquiries	29

Abbreviations

Term	Description
CA	Clearing Agent
CBF	Clearstream Banking Frankfurt
CBL	Clearstream Banking Luxembourg
CCP	Central Counterparty
CE(S)T	Central European (Summer) Time
CM	Clearing Member
CmaX	Collateral Management System of CBL
CSD	Central Securities Depository (e.g. CBF)
DC	Direct Client
DCM	Direct Clearing Member
FoP	Free of Payment
GCM	General Clearing Member
ICM	Individual Clearing Model
ICSD	International Central Securities Depository (e.g. CBL)
IDCM	ISA Direct Clearing Member
ISIN	International Securities Identification Number
LSOC	Legally Segregated Operationally Commingled
NCM	Non-clearing Member
RC	Registered Customer
SC	Specific Client
STP	Straight-through processing
UTC	Coordinated Universal Time
Xemac	Collateral Management System of CBF

1 Introduction

This document provides an overview of the functionality made available with C7 release 4.0 onwards. This release was dedicated entirely to the porting of collateral management functions from Eurex Classic to C7 and was introduced in December 2017.

Please note that since the collateral management functionalities are largely distinct from other C7 functionalities, this functional reference has been created as a stand-alone document dedicated to collateral management functionalities only.

For detailed information on the C7 Clearing GUI, please refer to the C7 Clearing GUI - User Manual, which is available for download on the Eurex Clearing website:

www.eurex.com/ec-en/ > Support > Initiatives & Releases > C7 Releases > related release > System documentation

Throughout this document, reference is made to a “member” which generally means a user of the system/C7 Clearing GUI. In most cases, a member can be a pool sponsor or a pool owner as the user of the system/ C7 Clearing GUI. In cases where a differentiation needs to be made between the role of sponsor vs. owner (e.g. sponsor approval is required), the terms sponsor and/or owner will be used explicitly. Additionally, the terms clearing house, member, sponsor and owner can also refer to the corresponding user (i.e. employee) within that organization.

1.1 Audience

This document is intended for all members and vendors intending to make use of the C7 collateral management services and serves as an overview of how to use the service. It assumes that the reader has a basic understanding of the clearing and collateral management functionalities and the systems offered by Eurex Clearing.

1.2 Conventions used in this document

Cross-references to other chapters within this document are always clickable, but not marked separately.

Hyperlinks to websites are underlined.

2 Interfaces

2.1 C7 Clearing GUI for collateral management services

There is a designated section of the C7 Clearing GUI for collateral management services. Throughout this document, 'C7 Clearing GUI' stands for this very functionality. Members can use the C7 Clearing GUI for all collateral management services in all collateral pools.

For detailed information on the C7 Clearing GUI, please refer to the C7 Clearing GUI - User Manual, which is available for download on the Eurex Clearing website:

www.eurex.com/ec-en/ > Support > Initiatives & Releases > C7 Releases > related release > System documentation

Reports

Reports are solely distributed via the Common Report Engine. Reports newly introduced since C7 release 3.0 are available in the XML and CSV file formats. Full details on report structures and XSD schema files are available on the Eurex Clearing website in the Eurex XML Reports - Reference Manual.

www.eurex.com/ec-en/ > Support > Initiatives & Releases > C7 Releases > related release > System documentation > Reports

For further information on the Common Report Engine, please refer to the Common Report Engine (CRE), User Guide. All documents are available at:

www.eurex.com/ec-en/ > Support > Technology > Common Report Engine

2.2 System time

C7 runs in UTC and displays all timestamps in UTC. This applies also to the C7 Clearing GUI for collateral management.

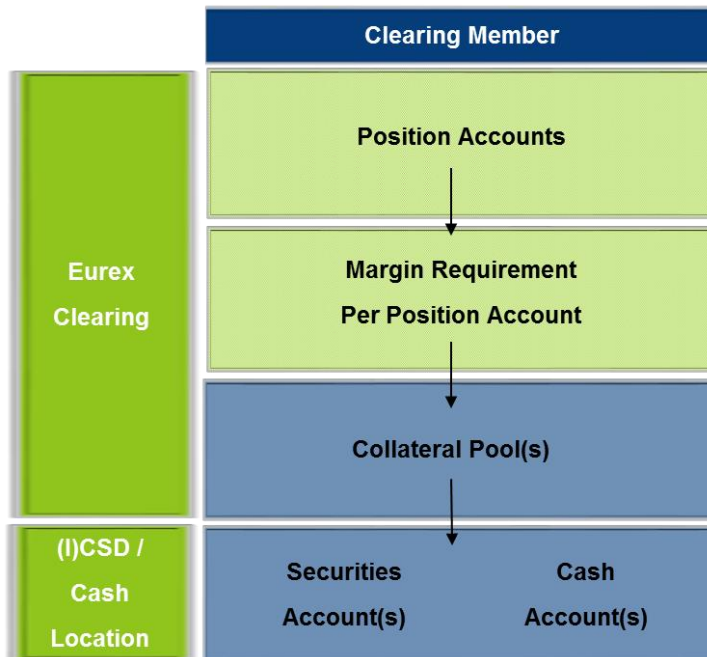
For regulatory reporting purposes, some reports feature timestamps converted to Frankfurt local time, i.e. CE(S)T.

For details on all reports, please consult the Eurex Clearing XML Reports - Reference Manual.

3 Client asset protection and collateral pool concept

Eurex Clearing offers various client asset protection (CAP) models where it is possible to segregate a clearing member's own collateral assets from its clients' assets or separate clients' assets from other clients' assets. Segregating clients' assets allows for a high recoverability of client collateral in case the clearing member goes into default.

CAP is achieved through the concept of collateral pools in the collateral application. The collateral pools concept ripples through all layers of Eurex Clearing's risk and collateral management processes:



- The trades concluded on Eurex Clearing associated markets are reflected on the relevant position accounts, i.e. the proprietary accounts P₁ and P₂, the market making accounts M₁ and M₂ and the agent accounts A₁..A_n or flexible accounts.
- Eurex Clearing's risk management calculates the margin requirements per risk netting unit (RNU) which includes one or multiple position account(s) and, if applicable, performs netting of margin requirements according to the associated position accounts. The position accounts/RNUs are associated to one and only one collateral pool. Consequently, Eurex Clearing's risk management applications aggregate the margin requirements of the relevant position accounts into a margin requirement per collateral pool.
- A collateral pool holds securities and/or cash collateral used to cover the margin requirements associated to that pool.
 - Security collateral is held in dedicated securities accounts at the respective (I)CSD and it is pledged or title transferred to Eurex Clearing. Alternatively, it can be provided via the triparty collateral management systems CmaX (CBL) or Xemac (CBF).
 - An (I)CSD account is associated to a collateral pool. In some scenarios, a single (I)CSD account may source multiple collateral pools. If so, asset tagging is required in order to assign the specific ISIN to the target collateral pool.
 - Cash collateral is provided to Eurex Clearing by way of full title transfer. Because all cash transactions are transferred into a single account at Eurex Clearing, segregation is achieved on the clearing house level using the record-keeping of Eurex Clearing.

4 Segregation models

C7 collateral management services facilitate handling of collateral provided under different segregation models. The following gives a short overview of the segregation models currently supported by Eurex Clearing. All models below are supported by the same collateral pool concept.

- Omnibus segregation
- Individually Segregated Accounts
- LSOC segregation

For additional information regarding segregation models, please refer also to the Eurex Clearing homepage:

<http://www.eurex.com/clearing-en/risk-management>

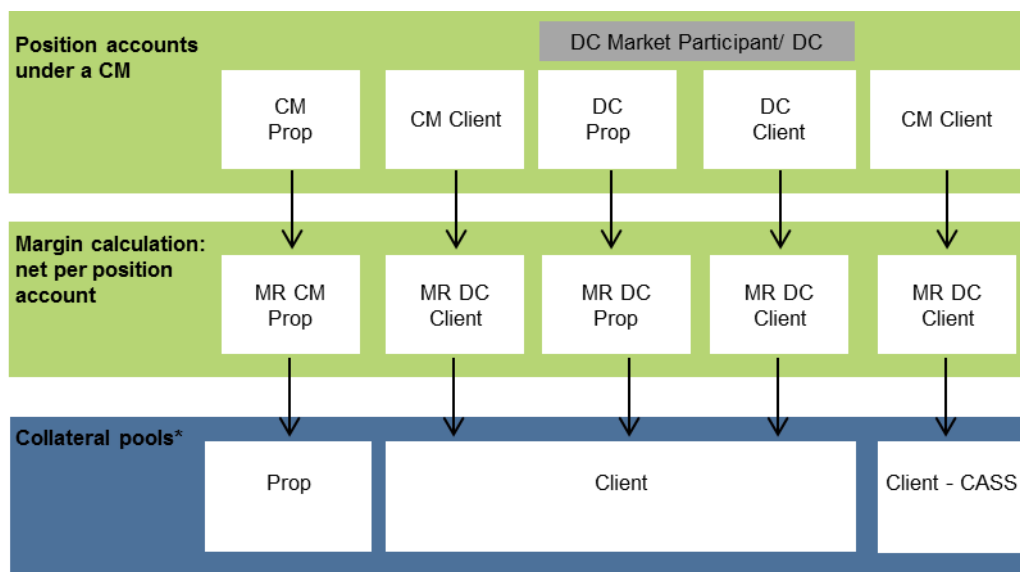
https://www.eurex.com/resource/blob/32876/82ebe58f0386c4f6e25bb70993eab9fb/data/brochure_cap.pdf

4.1 Omnibus Segregated Account (OSA)

The omnibus segregation model allows Clearing Members (CMs) to segregate client positions and collateral (for multiple clients) from the Clearing Member's proprietary positions and collateral.

Eurex Clearing's omnibus segregation models are highly flexible and aim to address the requirements of our members and their clients. The benefits for clients of omnibus segregation include:

- porting
- return of collateral (return segregated from the CM's proprietary business) and
- compliance with EMIR requirements.



* This is a sample arrangement for collateral pools. For further details, please contact your Key Account Manager.

Within the omnibus segregation arrangements, position segregation for clients can be supported.

- The Elementary Clearing Model (ECM) is an omnibus client segregation model. It provides for the segregation of proprietary positions and assets of a Clearing Member from its client-related positions and assets.
- Our omnibus offering provides Clearing Members with three options for the segregation of their clients' positions and assets.

Position segregation:

The position account structure within the ECM supports the segregation of positions of undisclosed direct customers (net omnibus segregated account - NOSA) and disclosed direct clients (DC) (gross omnibus segregated account - GOSA) from the positions of their (indirect) clients. The accounts maintained in relation to indirect clients are as well offered as NOSA or GOSA and are linked to the relevant position account of the direct client.

Asset segregation:

Elementary Clearing Model Asset Based Allocation (ECM by asset)

The setup segregates proprietary and client transactions into different Transaction Accounts which are linked to at least two different collateral pools. This means, assets are provided by the Clearing Member to Eurex Clearing separately for a) own transactions of the Clearing Member and for b) client-related transactions of the Clearing Member. Securities holdings have to be separated in two different CSD accounts.

Elementary Clearing Model – CASS Transactions (ECM – CASS)

This setup is operationally and functionally the same as ECM by asset. Transactions designated as CASS Eligible Transactions are legally segregated from non-CASS Transactions and Eurex Clearing signs trust acknowledgement letters provided by Clearing Members in order to enable them to comply with their obligations under the CASS rules of the United Kingdom Financial Conduct Authority (FCA).

General remarks:

- DC Own Accounts qualify as GOSA.
- For GOSA a separate position account can be set up under the Clearing Member's member ID for the clearing of Eurex Transactions and OTC Derivatives Transactions reflecting the position of that specific client. Therefore the margin requirement is calculated on a gross basis.
- As each NOSA reflects positions of multiple clients, the margin requirement calculation is performed on a net basis.
- Collateral in an omnibus structure will always be shared across multiple clients and leads to fellow customer risk.
- Collateral management options ensure the model is operationally simple to manage at the CCP.

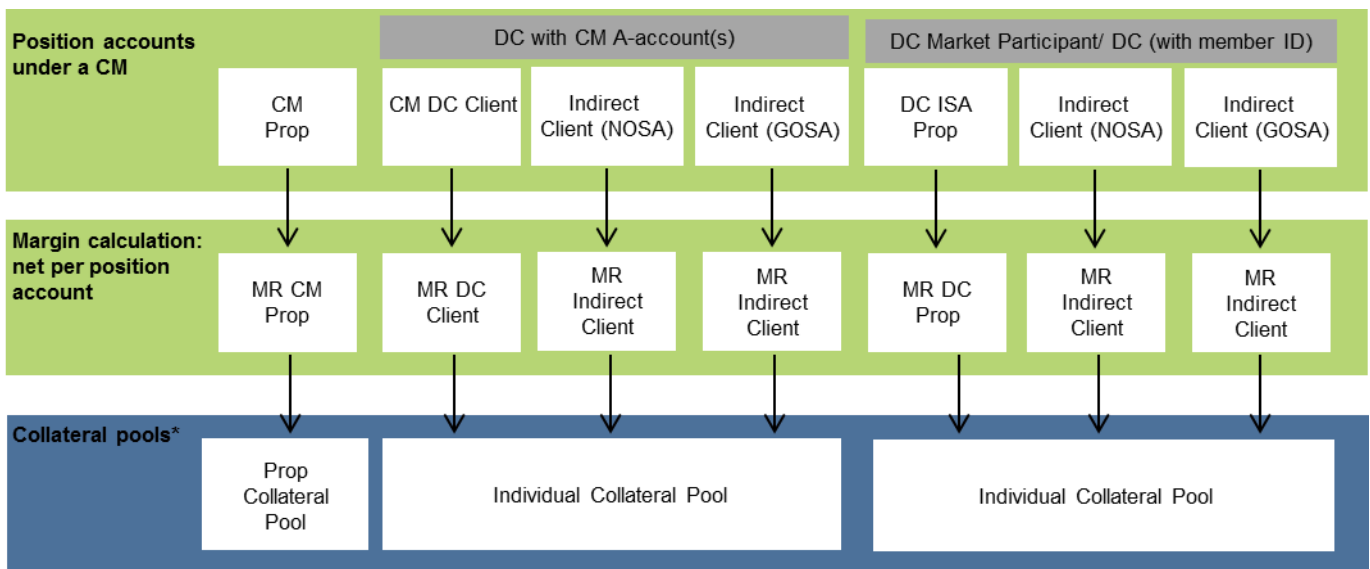
4.2 Individually Segregated Accounts (ISA)

The ISA model offers full physical segregation of a disclosed direct client's positions and collateral. With this model, the collateral assets of the client are segregated in a dedicated collateral pool and not comingled with any collateral from either the Clearing Member or its other clients.

4.2.1 Individual Segregated Account (ISA) for DCs

The model provides individual segregation without any contractual obligations of the client towards Eurex Clearing.

- Clearing Members can opt for the individual segregation for their direct clients. For Eurex Transactions and OTC Derivatives Transactions, a separate position account can be set up under the Clearing Member's member ID for individual segregation relating to a DC. UK-based Clearing Members have the option to clear ISA Transactions in accordance with the rules of the Client Asset Sourcebook (CASS Rules) of the United Kingdom Financial Conduct Authority.
- A DC is not required to enter into a clearing agreement with its Clearing Member and Eurex Clearing when opting for ISA. Eurex Clearing treats the Clearing Member as its principal counterparty who remains responsible for all transactions cleared for the respective DC with Eurex Clearing.
- Eurex Clearing establishes and maintains accounts for the Clearing Member per each DC, on which only transactions, cash amounts and margins (i.e. cash collateral and/or securities) are held for the account of the DC including its indirect clients.
- Excess collateral of a DC is segregated at the level of the CCP.

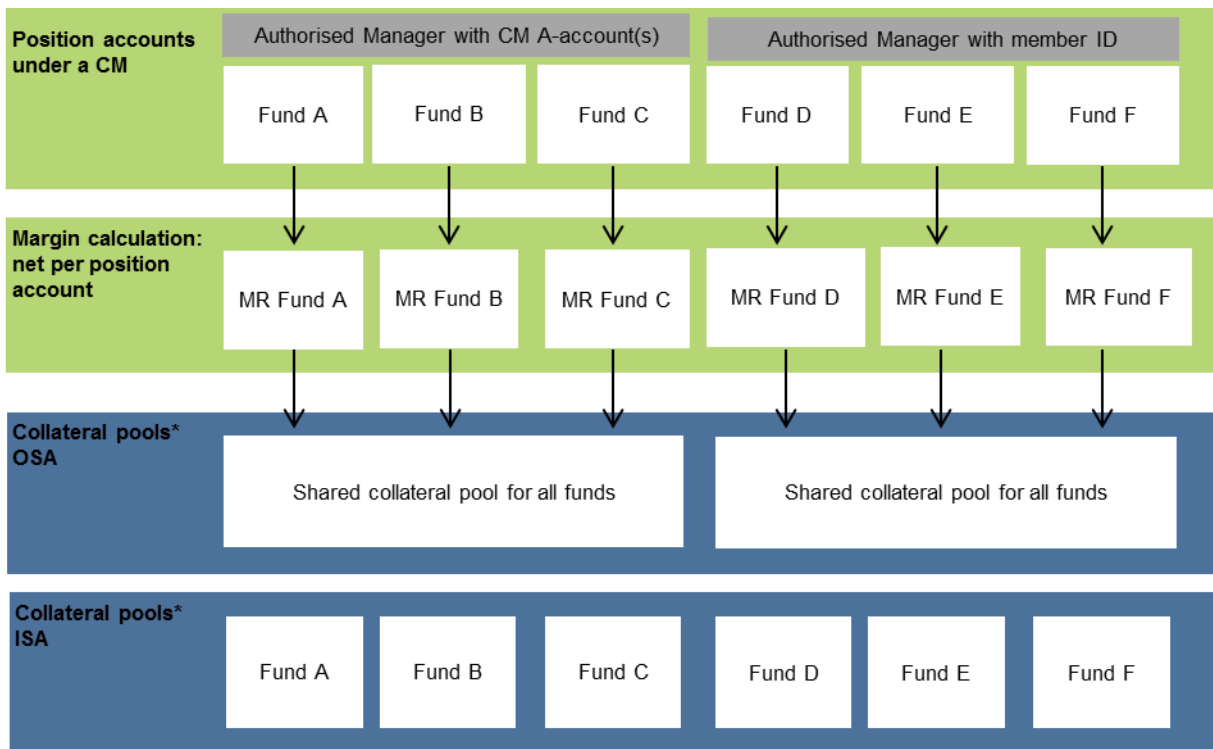


* This is a sample arrangement for collateral pools. For further details, please contact your Key Account Manager.

- Should there be a Clearing Member default, DCs can choose to port immediately to a Replacement Clearing Member.
- Alternatively, DCs can elect to close-out and directly receive their close-out proceeds and remaining collateral back.
- Collateral management options ensure the model is operationally simple to manage at the CCP.

4.2.2 Fund Manager set-up

The Authorised Manager (Fund Manager) Solution allows a fund specific position account set-up in an operational efficient manner.



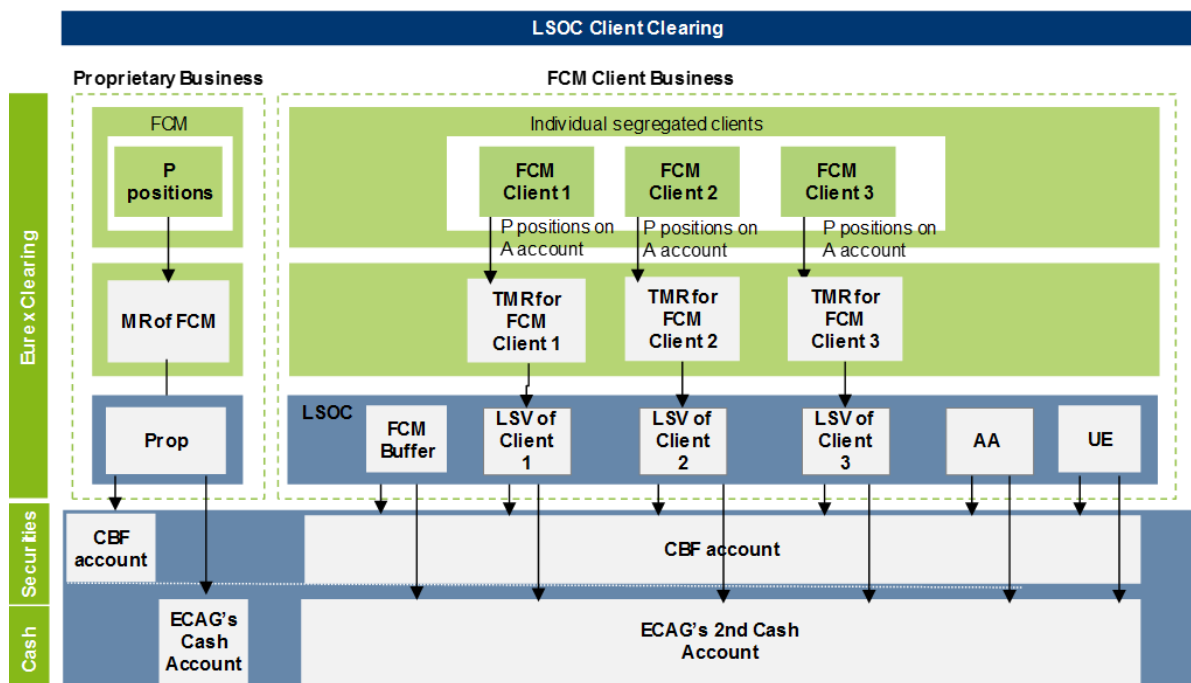
- Eurex Clearing has developed a simplified approach for funds which provides flexibility for an efficient position and collateral account setup and offers consolidated reporting for the fund manager.
- Each fund can be segregated and is disclosed to the CCP. Flexible position account and collateral pool arrangements are available.
- A fund manager can utilise A-accounts under the Clearing Member to achieve segregation/ margin efficiencies by setting up fund(s) in a single position account or setting up an account for the fund manager, if such setup complies with applicable law or regulatory requirements.
- The position setup reflects positions and margins segregated at fund level. This is available for a GOSA or an ISA client.
- Segregation is also possible as part of the existing omnibus setup of a Clearing Member (i.e. collateral pool shared with other clients).
- Reporting is consolidated on the fund manager level with a breakdown on position account/ fund level.

4.3 LSOC segregation model

Eurex Clearing offers an LSOC style (Legally Segregated Operationally Commingled) client-clearing framework in compliance with CFTC regulation Part 22 for the clearing of OTC Interest Rate Swaps.

The primary goal of the LSOC model is to protect FCM Clients from “fellow customer risk” i.e. the risk that customers of an FCM could sustain losses on other customers of that same FCM become insolvent.

LSOC is different from the traditional omnibus models because the value of collateral associated with every individual FCM client is legally segregated and protected whereas the collateral related to all FCM clients is commingled in one account.



The value of assets assigned to one FCM Client can never be utilised to meet the obligations of another FCM Client. The LSV represents the relevant value from a client asset protection point of view in terms of porting or difference claim redelivery in case of an FCM default.

Eurex Clearing supports “LSOC Without Excess” and “LSOC With Excess”. The latter requires FCMs to provide the clearinghouse with a collateral value report (CVR) in relation to its clients (FCM Clients).

In addition to the LSVs, and as depicted in figure above, an additional sub-account is established within the LSOC structure. This sub-account is the “**FCM Buffer**”. The FCM Buffer allows the FCM to post additional collateral to the omnibus collateral pool which is used to margin any FCM Client assigned to the respective pool, in particular during the intraday margining process of Eurex Clearing.

Another sub-account, “**Unallocated Excess**” (UE), is available to hold any excess that cannot be clearly assigned to any FCM Client. Funds in the UE pool cannot be used to margin, guarantee or secure any FCM Client.

UE is automatically returned to the FCM CM following the overnight margin call settlement, providing enough collateral in form of cash is available, unless explicitly requested by the FCM CM to be returned intraday. It can also be transferred to the FCM Buffer via the Clearing GUI.

Any value posted as margin collateral that is called due to a Margin Call under “LSOC With Excess” has to be assigned first to a sub-account called “**Assumed Allocation**” (**AA**). These positions represent the value that has been called to cover FCM Client’s shortfalls. After receiving next valid CVR file, the collateral has to be then booked on the LSVs, FCM Buffer or UE, respectively.

Under the “LSOC Without Excess” model, all excess collateral delivered outside of a margin call is booked to the FCM Buffer. Any such excess collateral provided under the “LSOC With Excess” model is booked to UE.

For any further information related to LSOC please refer to the website of Eurex Clearing.

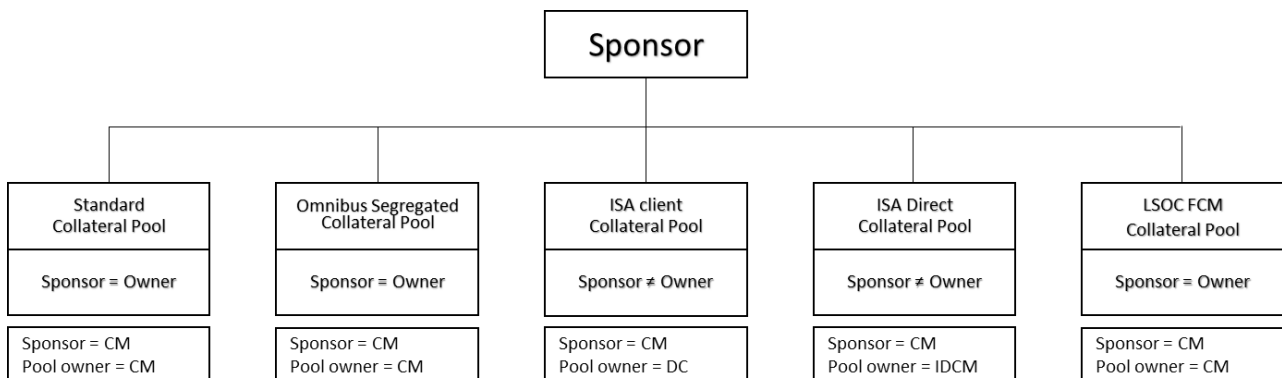
<https://www.eurex.com/ec-en/client-asset-protection-1443098>

5 Collateral management roles: pool sponsor versus pool owner

The collateral management application recognizes the following two collateral actor roles:

Pool sponsor: A pool sponsor is an entity that holds a clearing licence (GCM, DCM, CA) and performs certain functions such as fulfilment of payment obligations, risk management or delivery of securities margin collateral. The scope of sponsor's tasks is defined by the rule book of Eurex Clearing. It covers the sponsor's own collateral pool, related ISA/OSA collateral pools and/or IDCM collateral pool(s).

Pool owner: This term refers to segregated clients such as ISA (DC) and IDCM to emphasize their ownership of the provided collateral. A pool sponsor can also be a pool owner at the same time (e.g. for proprietary and omnibus segregated pools). If the pool sponsor is different from the pool owner, the latter might enter instructions in the C7 Clearing GUI that have to be approved by the pool sponsor (providing that both parties have agreed to such a set-up).



As depicted in the above, for the different segregation models offered, the pool sponsor and pool owner role is fulfilled by different member types:

Pool sponsor: CM, CA (a clearing agent is by definition also a clearing member)

Pool owner: DC, IDCM

6 Entitlement

6.1 Overview

The entitlement mechanism used in C7 to grant members and users access to functionality also applies to collateral management services. This chapter gives an overview of the main principles of the entitlement model for C7 collateral management services and describes the set-up and configuration options.

6.2 Roles and privileges

The C7 entitlement model uses roles as a basis. The roles are assigned to a member and the member's service administrator can assign the roles to the other users.

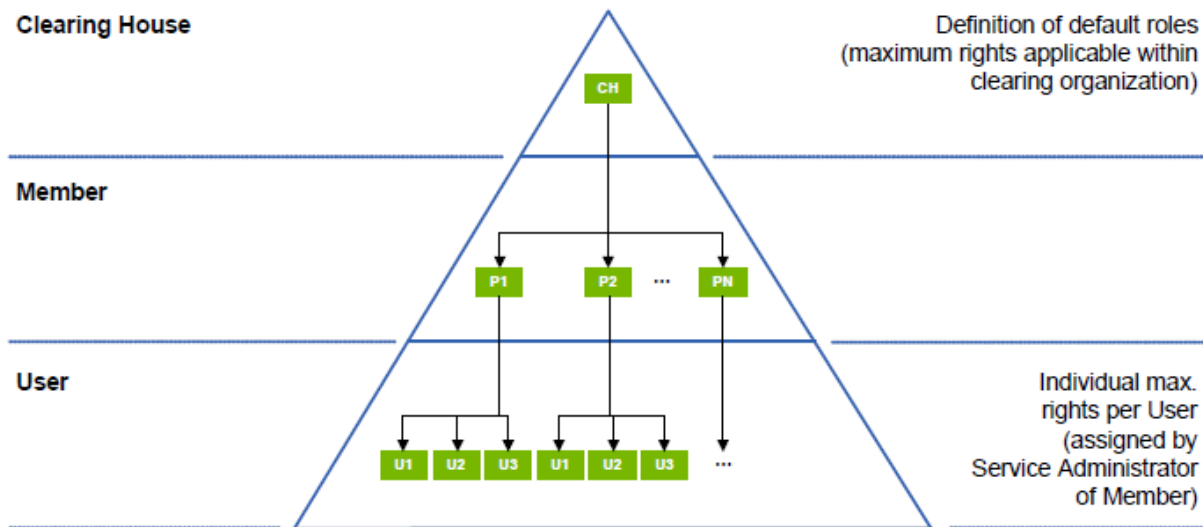
The roles themselves contain privileges. Every privilege defines access to a specific activity. For example, a member could have the privilege to "Add Cash Deposit". A request entered by a user can only be processed, if the corresponding privilege is assigned to the user/member.

The following roles are supported:

- **Collateral Manager** - This role represents the rights to perform collateral management related activities (e.g. "add cash deposit", "add security withdrawal")
- **Collateral Approval Manager** - This role represents the rights for a user of a clearing member to perform collateral management approvals related activities (e.g. "cash deposit approval", "security withdrawal approval")
- **Collateral Manager View** - This role provides the right to perform inquiries related to collateral management (e.g., "collateral position and transaction inquiry")
- **Permanent Cash Balance Manager** - This role enables the user to perform maintenance of permanent cash balance (e.g. "add permanent cash balance")
- **Service Administrator** - This role represents the necessary entitlement for administration activities (e.g. "user entitlement update")
- **Service Administrator View Only** - This role provides the right to perform inquiries related to administration activities (e.g., "user entitlement inquiry")
- **LSOC Collateral Transfer Manager** - This role enables a user to perform collateral transfers between collateral master pool and collateral sub-pools. LSOC Collateral Manager' role can be assigned to users of collateral pool sponsors. It is recommended to assign this role together with 'Collateral Manager View Only' role or with 'Collateral Manager' role.

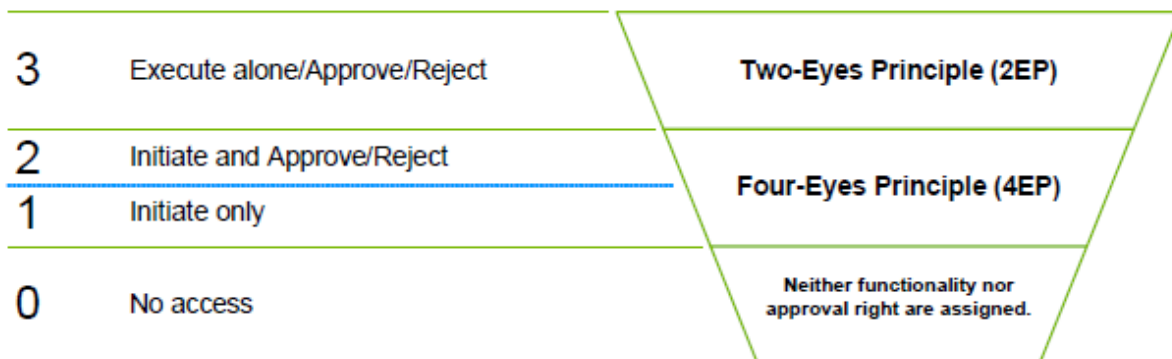
6.3 General set-up and maintenance

The C7 entitlement model follows a hierarchical approach. This approach uses a top-down logic for the allocation of access rights.



To provide a user with a right, this right must be initially assigned to the member to which the user belongs. Eurex Clearing defines the maximum entitlements of a member (e.g. based on the member type) and assigns the roles to the members accordingly. The member (service administrator) can define and maintain the entitlements for the other users. While assigning roles to users, the member can modify the settings of the privileges contained in it concerning the entitlement level.

The following four entitlement levels are available in the system:



- **Entitlement Level 3** indicates that the user is allowed to initiate a transaction alone and no second user is required for approval. The user can additionally approve or reject transactions entered by another user.
- **Entitlement Level 2** indicates that the user is allowed to initiate a transaction while requesting a four-eyes approval and approve or reject a transaction entered by another user.
- **Entitlement Level 1** indicates that the user is allowed to initiate a transaction requesting a four-eyes approval.
- **Entitlement Level 0** indicates that the user has no access to any privilege at all. This means that the user can neither initiate nor approve or reject a transaction.

As the entitlement concept follows a hierarchical approach, the entitlement of a user can never exceed the maximum entitlements of the member. Consequently, reductions in these maximum entitlements of a member are automatically applied to the entitlement settings of the affected users.

For detailed information on the entitlement mechanism, please refer to the C7 - User Entitlement Guide, available for download on the Eurex Clearing website:

www.eurex.com/ec-en/ > Support > Initiatives & Releases > C7 Releases > related release > System documentation

6.4 Four-eyes principle processing

Entitlement levels define how a certain activity can be performed by a user and to which extent. If the four-eyes principle is required for a certain activity, a user cannot perform the action on his own, but needs a second user to approve the action. The user initiating the action for which the four-eyes principle is required needs to have at least the entitlement level 1. For the approval of any four-eyes principle request, the user requires an entitlement level of at least 2. Four-eyes principles can be applied to a range of activities as listed in the C7 User Entitlement Guide available for download on the Eurex Clearing website:

www.eurex.com/ec-en/ > Support > Initiatives & Releases > C7 Releases > related release > System documentation

For further detail on particular four-eyes logic per functionality, please refer to the respective chapters below.

6.4.1 Four-eyes principle processing for entitlement settings

If an activity is executed that requires a four-eyes approval, it remains as a pending four-eyes principle request as long as the approval/rejection is outstanding. The Four Eyes Approval Overview C7 Clearing GUI window displays an overview of all pending four-eye principle requests for approval/rejection. This allows members to configure four-eyes approval per activity according to their individual needs.

6.4.2 Four-eyes principle processing for collateral management features

Members may optionally specify that activities related to collateral transaction entries, approvals and rejections are subject to the four-eyes principle process. Requests requiring approval by a second user are displayed on the Four Eyes Approval Overview C7 Clearing GUI window, accessible via the Four-Eyes Principle menu. The overview window shows pending requests and allows their approval or rejection. For each pending request, more information can be shown in a detail window.

7 Collateral management

From a member/user point of view, the collateral management process mainly involves the deposit and withdrawal of collateral in the form of cash, securities or claims. Deposits and withdrawals can be triggered by the clearing house (e.g. in case of a margin call) or by the member/user (e.g. in case of a collateral excess or a substitution request). The individual processes described hereafter apply generically for all usage types (margin collateral, clearing fund contributions, and company capital requirements). However, in practice, some differences/restrictions may apply (e.g. currencies allowed for one usage type might not apply for a different usage type).

Members can view their collateral positions in the C7 Clearing GUI Collateral Pool Status Overview window.

Collateral transfers instructions via the C7 Clearing GUI are valid per default for the actual business day. However, the member is able to change the value date for a cash deposit and withdrawal and for a securities withdrawal for a future business date. Such an instruction is stored in C7 Clearing system until the selected value date and will follow the ordinary processes on the value date. Any instruction can be cancelled by the member until it was delivered to the payment systems for cash or CSDs for securities.

7.1 Cash collateral

Eurex Clearing accepts five currencies (EUR, CHF, USD, GBP and JPY) as cash collateral whereas four currencies as cash collateral can be chosen to cover intraday margin calls: EUR, CHF, USD and GBP. Overnight margin calls will only take place in the clearing member's chosen clearing currency, EUR, CHF or GBP. This is also valid for contributions to the default fund.

Product-related payments, such as variation margin, premiums etc., need to be settled in the underlying product currency.

In general, Eurex Clearing facilitates two set-ups for margin collateral in the form of cash which trigger different processes:

1. Auto-repay set to "Yes"

This set-up has the following aspects for the cash disposition

- Cash collateral in a non-clearing currency of the pool is substituted with the clearing currency of the pool if it is necessary to cover the initial margin requirement
- Excess cash collateral in the clearing currency of the pool is paid back to the sponsor in the end of day process
- Shortfalls of collateral are covered by the clearing currency in the end of day process

2. Auto-repay set to "No"

This set-up has the following aspects for the cash disposition

- Cash collateral remains in the collateral pool apart from cash collateral in non-clearing currency such as USD which is substituted in the end of day process to cover the margin requirement, if necessary.
- Non-clearing currency USD provided as a Permanent Cash Holding (see chapter 7.1.4) will remain in the collateral pool.
- Excess cash collateral remains in the collateral pool apart from cash collateral in non-clearing currency such as USD (see above)

- Shortfalls of collateral are covered by the clearing currency in the end of day process

The sponsor is able to choose the set-up per collateral pool. Per default, Eurex Clearing sets up omnibus collateral pools with “Auto-repay Yes” and individual segregated collateral pool with “Auto-repay No”.

For further information regarding cash collateral such as cut-off times or admitted settlement banks, please refer also to the Eurex Clearing homepage:

<https://www.eurex.com/ec-en/services/collateral-management/securities-collateral>
<https://www.eurex.com/ec-en/services/collateral-management/cash-collateral>

7.1.1 Cash deposits

Cash collateral deposits can be initiated via the C7 Clearing GUI Collateral Transaction Input window by pool sponsors or owners. In the case of ISA and ISA Direct collateral pools, the owner is different from the sponsor of the collateral pool. Therefore, the sponsor’s approval is required. If an owner creates a deposit in the C7 Clearing GUI, it then remains in a pending status until the sponsor approves or rejects the transaction. If four-eyes principle approval is required, then the pending transaction can also be viewed in the C7 Clearing GUI Four Eyes Approval Overview C7 Clearing GUI window.

A member's cash deposit request in the C7 Clearing GUI triggers a debit from his cash account and a credit to Eurex Clearing’s account. Upon receipt of cash collateral on Eurex Clearing's account, the collateral balance for the respective collateral pool is updated.

Members can view their cash deposit transactions in the C7 Clearing GUI Collateral Transaction Overview window.

The input amount for cash deposits is limited as followed:

Cash amount	Currency	2EP available	4EP available
<= 250.000.000,00	CHF, EUR, GBP, <u>JPY</u> , USD	Yes	Yes
> 250.000.000,00 and <= 500.000.000,00	CHF, EUR, GBP, <u>JPY</u> , USD	N/A	Yes
> 500.000.000,00	CHF, EUR, GBP, <u>JPY</u> , USD	N/A	N/A

By entering an amount larger than 250.000.000,00 the system will inform the entering user that the instruction needs 4EP approval. This information should prevent the user to enter an instruction without having a second user available to confirm the instruction.

In case the proposed deposit amount is larger than 500.000.000 multiple smaller deposits need to be entered by the Clearing Member user.

These limits are valid for all Clearing Member and all collateral pools.

There are no limits for the number of instructions entered by a single user or on Clearing Member level on a business day.

7.1.2 Cash withdrawals

Cash collateral withdrawals can be initiated via the C7 Clearing GUI Collateral Transaction Input window by pool sponsors or owners. In the case of ISA and ISA Direct collateral pools, the owner is different from the sponsor of the collateral pool. Therefore, the sponsor’s approval is required. If an owner creates a withdrawal in the C7 Clearing GUI, it then remains in a pending status until the sponsor approves or rejects the transaction. If four-eyes principle approval is required, then the pending transaction can also be viewed via the C7 Clearing GUI Four Eye Approval Overview C7 Clearing GUI window.

For cash withdrawals, the approval of the clearing house is always required as the member's collateral must be sufficient to cover margin requirements at all times. Upon a member's withdrawal request in the C7 Clearing GUI, Eurex Clearing checks that the withdrawal would not result in a shortfall. If this is the case, Eurex Clearing will release the requested cash withdrawal and update collateral balances accordingly. Eurex Clearing instructs a cash payment to the member's cash account.

Members can view of their cash withdrawal transactions in the C7 Clearing GUI Collateral Transaction Overview window.

7.1.3 Permanent Cash Balance for EUR, CHF and GBP

Members have the option to set a Permanent Cash Balance (PCB) per pool. The PCB is the pre-defined cash amount that a member wants to hold with Eurex Clearing. Activation of the PCB might lead to automated cash movements in the morning:

- mandatory cash call if the cash balance in the respective collateral pool and currency falls below the predefined PCB - regardless of collateralization level
- auto-return of excess cash above the predefined PCB in the respective collateral pool in the clearing currency - only if no under-collateralization exists and auto-repay is set up to "Yes" (see chapter 7.1)

The PCB functionality is available for EUR, CHF and GBP and for all margin collateral pools. This is possible only for PCB allowed currencies and where the member has the corresponding infrastructure for the currency. Members can view their PCBs in the C7 Clearing GUI Permanent Cash Balance Inquiry and Maintenance window.

7.1.4 Permanent Cash Holding for USD

Members have the option to use Permanent Cash Holding functionality to keep with Eurex Clearing pre-defined USD balances in the chosen collateral pool overnight. Permanent Cash Holding can be instructed via the C7 Clearing GUI Collateral Transaction Input window with type of money "Term".

The deposit and withdrawal instructions can be entered by pool sponsors or owners. The precondition is to have the corresponding infrastructure for USD. Members can view their USD Permanent Cash Holding in the C7 Clearing GUI Collateral Position Details window.

Note, there is a minimum holding period of 1 day for the Permanent Cash Holding in USD and the deposit and withdrawal requests have to be completed by 09:00am CET on T-1.

7.1.5 Excess Collateral Pool

Members can use one or multiple excess collateral pool(s) to minimise the number of intraday margin calls for their ISA collateral pools and segregated omnibus collateral pools. Excess collateral pool will be set up per CM upon request as it is an optional service.

Excess collateral pool will consist of cash collateral provided and owned by the CM and it can be linked to any collateral pool(s) as required.

Eurex Clearing calculates the collateralization of any collateral pool based on margin requirements and provided collateral every ten minutes during the Eurex Clearing online hours.

If there is a collateral shortfall on any segregated pool, and such a pool has been linked to excess collateral pool, required cash collateral will be automatically transferred from the excess collateral pool to the specific collateral pool to avoid intraday margin calls.

These transactions will be booked with type of money "E" (excess) and create an additional cash position in the margin pools with type of money "E". The cash transaction type "330" Excess Cash Deposit and "332" Excess Cash Withdrawal reflect the transfers. These values are incorporated in the relevant reports: CD230, CD231, CI720 and CI731.

The new pool type will be displayed in the C7 CMS GUI Collateral Pool Overview window. In addition, new pool usage types of the excess collateral pool, i.e. intraday (I) and overnight (O) have been introduced to ensure smooth processing and visibility of transactions in the reports.

Eurex Clearing re-transfers excess cash collateral from selected segregated collateral pools to the excess collateral pool

- intraday if the collateral pool is overcollateralized by deposit of any other collateral or due to reduced margin requirements;
- before the end of day process to the overnight excess collateral pool until the shortfaling collateral pool is balanced with the end of day margin call. Once the margin call is fulfilled, the cash amount will be re-transferred to the intraday excess collateral pool;
- shortfaling collateral pools will be balanced with the end of day margin call as per regular processing.

The utilization of the excess collateral pool will be visible in the relevant reports.

Allowed Pool Currency for excess collateral pool intraday and overnight is EUR initially.

For further information regarding set-up, mechanics, reporting, etc. related to excess collateral pool please contact your Key Account Manager.

7.1.6 Optional additional cash account for intraday margin calls for ISA Direct Clearing Members

Optionally, Clearing Agent (CA) and ISA Direct Clearing Member (IDCM) can request to set up an additional external cash account for fulfillment of the intraday margin calls related to IDCM's exposure. This set-up means that all intraday margin calls will not be issued per default against the CA's external cash account (current set-up) but against the designated additional cash account (that might be part of IDCM's own cash infrastructure).

Note this functionality is for intraday margin calls only.

The cash amounts delivered due to any such intraday margin call will be booked and reflected in the respective collateral pool with cash position type of money "I".

End of Day the cash position with the type of money "I" will be 1) substituted as part of the regular End of Day margin call process and 2) released on the next business day and credited to the relevant additional cash account.

For further information regarding set-up, mechanics, reporting, etc. related to additional cash account functionality please contact your Key Account Manager.

7.1.7 Type of Money

Type of Money is a key functionality that reflects different client, risk and regulatory needs in terms of cash management as it allows for a different processing of cash positions in the same currency within one collateral pool. [All Type of Money cash position are shown in the C7 Clearing GUI and on the reports as well.](#)

[An additional Type of Money for the cash collateral 'INTRADAY MARGIN CALL' is available.](#)

[This enhancement has member impact as explained below because the change will apply to all intraday cash positions created by intraday margin calls.](#)

[The Type of Money 'INTRADAY MARGIN CALL' \("Call"\) will give members more flexibility in their cash management and allow them to enter cash withdrawal instructions in CHF and EUR later than existing cut-off time, i.e. 09:30am CET for the cash positions created by intraday cash margin calls.](#)

All intraday margin calls in cash collateral currencies CHF, EUR, GBP, and USD will create automatically a respective cash position in the same currency with Type of Money "Call". These cash positions, in CHF and EUR, can be withdrawn via C7 CMS GUI closely to cut-off times of the market infrastructure (currently for CHF 01:30pm CET, EUR 05:30pm CET) at the same day as long as the request does not create a shortfall of the overall collateral value of the collateral pool.

The maximum amount eligible for such withdrawal requests would be value of intraday margin calls issued on a respective day.

Cash positions with Type of Money "Call" which are not withdrawn on the same business day will be automatically rebalanced to Type of Money "Own" once the cut-off time is reached. Therefore, there will be no changes to the End of Day processing, including the calculation of the cash handling fee.

The table below gives a brief overview of the available functionality:

Type of Money	Available for	Usage
OWN	All Clearing Members	Default value for the processing of cash collateral
TERM	All Clearing Members	Permanent USD cash collateral without end of day substitution and dedicated cash handling fee; valid for pool usage - M (Margin) and F (Default Fund contribution), section 16.4.7
EXCESS	All Clearing Members	Cash position for intraday cash collateral transfers from a dedicated excess collateral pool incl. end of day process (functionality for a more efficient collateral management), section 16.4.8
INTRADAY	Only for ISA Direct Clearing Members	Cash position for intraday margin calls for ISA Direct Clearing Members incl. end of day substitution (2nd cash account for ISA Direct Clearing Members), section 16.4.5
BLOCKED	All Clearing Members	Cash position in one or multiple currency which has to stay in the collateral pool and cannot be withdrawn by CM. The amount covers the margin requirements as well. Deposit and withdrawal will be processed by Eurex Clearing only in case due to Clearing Conditions or Clearing License requirements.
<u>CALL</u>	<u>All Clearing Members</u>	<u>Cash position in CHF, EUR, GBP, and USD created by intraday margin calls. CHF and EUR positions can be withdrawn at a later time close to the market infrastructure cut off times if the collateral pool is overcollateralized.</u>

7.2 Securities collateral

Eurex Clearing accepts a wide range of ISINs as security collateral. Members can choose to open securities accounts either at Clearstream Banking Frankfurt (CBF), Clearstream Banking Luxembourg (CBL) or SIX SIS.

For further information regarding security collateral such as eligibility, cut-off times or delivery mechanisms, please refer also to the Eurex Clearing homepage:

<https://www.eurex.com/ec-en/services/collateral-management/securities-collateral>

7.2.1 Security deposit

Security collateral deposits cannot be made via the C7 Clearing GUI Collateral Transaction Input window. Security deposits must be made through the corresponding collateral location ((I)CSD). The deposits will then be processed via communication between the (I)CSD and Eurex Clearing. After deposits have been received, Eurex Clearing will update collateral balances accordingly. If a deposit is not eligible, Eurex instructs its return.

Members can view their security deposit transactions in the C7 Clearing GUI Collateral Transaction Overview window.

7.2.2 Security withdrawal

Security collateral withdrawals can be initiated via the C7 Clearing GUI Collateral Transaction Input window by pool owners or pool sponsors. In the case of ISA and ISA direct collateral pools, the owner is different from the sponsor of the collateral pool. Therefore, the sponsor's approval is required. If an owner creates a withdrawal in the C7 Clearing GUI, it then remains in a pending status until the sponsor approves or rejects the transaction. If four-eyes principle approval is required, then the pending transaction can also be viewed via the C7 Clearing GUI Four Eye Approval Overview window.

For security withdrawals, the approval of the clearing house is always required as the member's collateral must be sufficient to cover margin requirements at all times. Upon a member's withdrawal request in the C7 Clearing GUI, Eurex Clearing checks that the withdrawal would not result in a shortfall. If this is the case, Eurex Clearing will release the requested security withdrawal, initiate the return of the security collateral to the member's redelivery account at the (I)CSD and update collateral balances accordingly. If a withdrawal request would lead to an under-collateralization in the collateral pool, the transfer of the requested securities is postponed until the appropriate amount of collateral is in the pool to fully cover the margin requirements. If the transaction is flagged for next day settlement, the under-collateralization will be covered by an overnight margin call and the collateral returned the next morning.

Members can view their security withdrawal transactions in the C7 Clearing GUI Collateral Transaction Overview window.

7.3 Claims

Members using Clearstream Banking's triparty collateral management systems Xemac (CBF) or CmaX (CBL) can deliver securities collateral to Eurex Clearing by entering claim amounts in Xemac or CmaX. Xemac/CmaX automatically allocates securities collateral according to pre-defined eligibility criteria. Xemac/CmaX also offer daily mark-to-market securities evaluation and automatic substitution of allocated securities (e.g. securities subject to corporate action events).

Claims can only be assigned to one collateral pool and currency. However, a pool can have multiple claims assigned to it.

7.3.1 Claim increase

Claim increases cannot be made via the C7 Clearing GUI Collateral Transaction Input window. Claim increases must be made directly in Xemac or CmaX. The claim increases will then be processed automatically via communication between the Xemac/CmaX and Eurex Clearing. After a claim increase has been received at Eurex Clearing, collateral balances will be updated accordingly.

Members can view their claim increase transactions in the C7 Clearing GUI Collateral Transaction Overview window.

7.3.2 Claim decrease

Claim decreases cannot be made via the C7 Clearing GUI Collateral Transaction Input window. Claim decreases must be made directly in Xemac or Cmax. The pool sponsor or owner can perform the claim decrease. In the case of ISA and ISA direct collateral pools, the owner is different from the sponsor of the collateral pool. Therefore, the sponsor's approval is required. If an owner inputs a claim decrease, it then remains in a pending status until the sponsor approves or rejects the transaction. If four-eyes principle approval is required, then the pending transaction can also be viewed via the C7 Clearing GUI Four Eye Approval Overview window.

For claim decreases, the approval of the clearing house is always required as the member's collateral must be sufficient to cover margin requirements at all times. Upon a member's decrease request via Xemac or Cmax, Eurex Clearing checks that the decrease would not result in a shortfall. If this is the case, Eurex Clearing will approve the requested claim decrease and update collateral balances accordingly.

In Xemac, forced claim decreases may occur when the value of the allocated securities no longer covers the claim amount and the member has insufficient or no additional securities available for allocation. For example, this can occur due to lower securities values because of prices changes or when securities become ineligible as they near maturity. In case of forced claim reductions, no further approvals are necessary and they are processed STP.

Members can view their claim decrease transactions in the C7 Clearing GUI Collateral Transaction Overview window.

8 Multiple transaction processing: Bulk upload

In cases where members need to make multiple deposits and withdrawals across numerous collateral pools, the C7 Clearing GUI for collateral management services offers a bulk upload functionality. Members can upload cash deposit and withdrawal as well as securities withdrawal instructions via csv file to the C7 Clearing GUI. These are then processed as individual transactions in the same way as if they had been inputted individually. Successfully uploaded transactions can be viewed in the Collateral Transaction Overview window.

Please note that the corresponding cut-off times for cash and securities deliveries/withdrawals also apply for this application and the future value date functionality as available as well.

The bulk upload can be initiated in the C7 Clearing GUI Transaction Input window.

9 Collateral evaluation / Excess and shortfall

In general, collateral is evaluated every 10 minutes throughout the day. At the time of evaluation, the most current available prices, risk parameters and exchange rates are used. Additionally, changes in collateral positions due to deposits and withdrawals or changes in the corresponding margin requirement also trigger a new evaluation of collateral. These reevaluations are then reflected in the collateral balance which can be viewed in diverse C7 Clearing GUI collateral management related windows.

Collateral pools can have margin requirements and collateral in various currencies. If there is a margin requirement and collateral in the same currency, these will be offset against each other to the extent possible. This avoids the use of an FX haircut. **Thereafter, the resulting collateral surplus/shortfall will be converted into the clearing currency based on corresponding debit and credit rates, any remaining margin requirements and collateral are converted into the clearing currency using the corresponding FX haircut.**

Changes in the collateral value and/or margin requirements can lead to an excess or a shortfall in the collateral pool. Excess securities collateral and claims are always released when explicitly requested by the sponsor/owner regardless of the segregation model. For the procedure concerning excess cash collateral, please refer to 7.1.

Margin shortfalls result in a margin call against each collateral pool either early in the morning based on overnight valuations or also intraday. In general, margin calls are made against the individual collateral pool and must be met by the pool sponsor. Margin surpluses in any collateral pool cannot be used to cover a shortfall of the non-segregated (proprietary) collateral pool or any other segregated collateral pool. End of day margin calls are made in the clearing currency of the corresponding collateral pool. Intraday margin calls can be made in the clearing currency or USD depending upon the individual currency cut-off times.

10 Inquiries

The C7 Clearing GUI for collateral management services provides members/users possibilities to make inquiries regarding collateral management functionalities (e.g. transaction or positions overview/details). These are available within the various C7 Clearing GUI windows for collateral management services.

For detailed information on the C7 Clearing GUI, please refer to the C7 Clearing GUI - User Manual, which will be available for download on the Eurex Clearing website:

www.eurex.com/ec-en/ > Support > Initiatives & Releases > C7 Releases > related release > System documentation