

# Deutsche Börse Group's T7 - Cash Markets

## T7 Release 14.1 - T7 GUI What's New!

Version 1

Date 23. Apr 2026

# 1 New Across All T7 Cash GUIs

## 1.1 Standardized Column Identifiers - Affects Bulk Upload Templates

Several table column identifiers in the T7 Cash GUIs have been renamed to achieve a compact display and use consistent identifiers in all views.

This change affects all T7 GUIs, i.e. Cash Web Clearer, Cash Web/Java Admin and Cash Java Trader and also the bulk import files in use.

It is **highly** recommended to test your individual import files and adapt them as needed. The bulk-import templates that are available from the Trader GUI have been adapted already (Help -> Export Bulk Templates).

Below are some examples of the standardization - for a list of affected views please refer to section 5 *ADDENDUM: List of affected Bulk-Import Offering Views*.

- `BusinessUnit` becomes `BU`, e.g. `EnteringBusinessUnit` -> `EnteringBU`
- `Execution` becomes `Exe`, e.g. `ExecIdentifier` -> `ExeID`
- `Identifier`, all variants of `Identifier` become `ID`
- `NetPosition` becomes `NetPos`
- `Price` and `Last` are shortened to `Prc` and `Lst` respectively, e.g. `LastTradePrice` -> `LstTrdPrc`
- `SettlementMethod`, `SettlementDate` are shortened to `StlMethod` respectively `StlDate`
- `Symbol` becomes `Product`
- `Underlying`, all variants denoting an Underlying become `UL`, e.g. `UndrId` -> `ULID`

The above list serves to illustrate a few examples, it is by no means exhaustive.

## 2 New Features T7 Cash Web Clearer

Please note, all new features described for the Xetra Clearer GUI are only available in the new T7 Cash Web Clearer.

### 2.1 Enhanced Drop Copy (EDC)

The new EDC functionality provides the clearing members (CM) access to the order book information of their non-clearing members (NCM). To achieve this, the new T7 Cash Web Clearer has been enhanced with the following views:

- *EDC Access Request* - to list and maintain (request/revoke) EDC requests between the CM and the associated NCMs

- *EDC Session Configuration* - to setup an EDC session to receive the order data from a particular NCM
- *Sessions* - to provide an overview of all sessions of the own business unit

Please note that the EDC Access Request becomes active the next day (if the NCM has approved). Same is valid for a newly created EDC Session (without any approval needed here).

### 3 New Features T7 Cash Web/Java Admin GUI

#### 3.1 Enhanced Drop Copy (EDC)

The EDC functionality does not only enable clearing members but also normal traders to access order book data for e.g. analytical purposes. To achieve this, the Xetra Admin GUI has been enhanced with the following views:

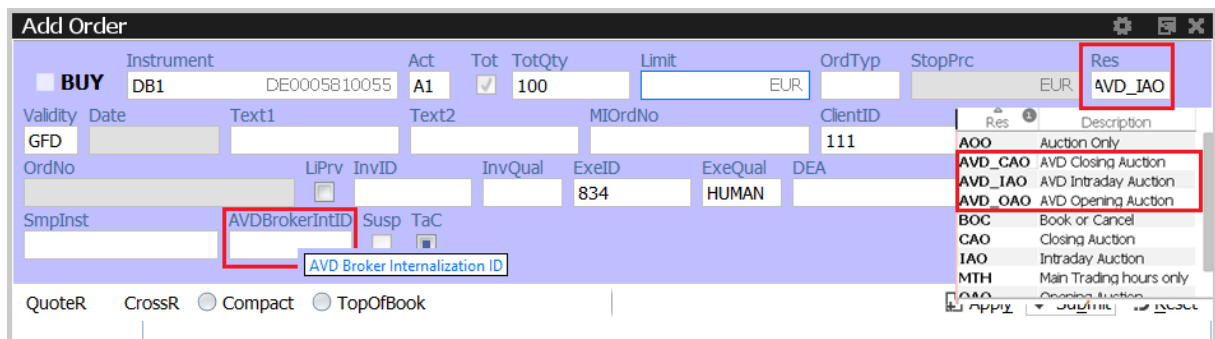
- *EDC Access Request* - to list and maintain (approve/decline) the EDC requests received from the CM
- *EDC Session Configuration* - to setup an EDC session to be able to receive the order data of a business unit

Please note that a legal notice must be read and confirmed before an EDC Access Request can be legally approved.

### 4 New Features T7 Cash Java Trader GUI

#### 4.1 Auction Volume Discovery (AVD)

The Xetra Trader GUI has been enhanced to support the new order type and its associated workflows.



The following enhancements to the *Order Entry* layout have been made:

- **new order restrictions:**
  - AVD\_OAO - Opening Auction Only
  - AVD\_IAO - Intraday Auction Only
  - AVD\_CAO - Closing Auction Only
- the **new optional field Internalization ID** to support the *Broker Internalization*.

The *Market* view displays data for **LstAVDQty** - Last AVD trade quantity and **LstAVDTim** - Last AVD trade time.

## 5 ADDENDUM: List of affected Bulk-Import Offering Views

The views listed below support bulk import and are therefore affected by the standardization of display names as described in 1.1 Standardized Column Identifiers - Affects Bulk Upload Templates.

**Although every effort was made to ensure the accuracy of this list, we cannot guarantee a 100% coverage, as there are a wide variety of customer-specific bulk import files.**

- T7 Entry Services
  - SettlementDate becomes StlDate
  - EnrichmentRuleID becomes EnrRuleID
- Pre-trade Risk Limits / TES Pre-trade Risk Limits
  - BusinessUnit becomes TradingBU
  - RiskGroupIdentifier becomes RiskGroup
  - DisableMember becomes DisableMbr
- EDC Session configuration
  - SharingBusinessUnit becomes SharingBU
- EDC Access Requests
  - ClearingBusinessUnit becomes ClrgBU
  - TradingBusinessUnit becomes TradingBU
- TES Auto Approval Rules
  - AutoApprovalRuleID becomes RuleID
  - EnrichmentRuleID becomes EnrRuleID
  - AutoApprovalRuleName becomes RuleName
  - InitiatingUserName becomes InitiatingUser
  - ExecQualifier becomes ExeQual
  - InvestQualifier becomes InvQual
  - LiqProvActivity becomes LiPrv